



# INTERNATIONAL GEMOLOGICAL INSTITUTE

## DIAMOND REPORT

October 8, 2024  
IGI Report Number **651457788**  
Description **NATURAL DIAMOND**  
Shape and Cutting Style **ROUND BRILLIANT**  
Measurements **4.71 - 4.74 X 2.90 MM**

## GRADING RESULTS

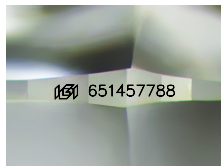
Carat Weight **0.40 CARAT**  
Color Grade **H**  
Clarity Grade **VS 2**  
Cut Grade **EXCELLENT**

## ADDITIONAL GRADING INFORMATION

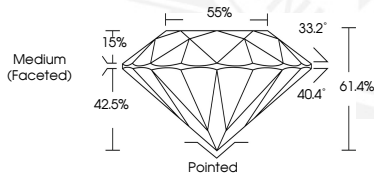
Polish **EXCELLENT**  
Symmetry **EXCELLENT**  
Fluorescence **NONE**  
Identification Features **FEATHER, CRYSTAL**  
Inscription(s) **(G) 651457788**

ELECTRONIC COPY

651457788



Sample Image Used



October 8, 2024  
IGI Report Number **651457788**  
ROUND BRILLIANT  
NATURAL DIAMOND  
4.71 - 4.74 X 2.90 MM  
Carat Weight **0.40 CARAT**  
Color Grade **H**  
Clarity Grade **VS 2**  
Cut Grade **EXCELLENT**  
Polish **EXCELLENT**  
Symmetry **EXCELLENT**  
Fluorescence **NONE**  
Inscription(s) **(G) 651457788**



October 8, 2024  
IGI Report Number **651457788**  
ROUND BRILLIANT  
NATURAL DIAMOND  
4.71 - 4.74 X 2.90 MM  
Carat Weight **0.40 CARAT**  
Color Grade **H**  
Clarity Grade **VS 2**  
Cut Grade **EXCELLENT**  
Polish **EXCELLENT**  
Symmetry **EXCELLENT**  
Fluorescence **NONE**  
Inscription(s) **(G) 651457788**



THIS DOCUMENT WAS PRODUCED WITH THE FOLLOWING SECURITY MEASURES: SPECIAL DOCUMENT PAPER, INK SCREENS, WATERMARK, BACKGROUND DESIGNS, HOLOGRAM AND OTHER SECURITY FEATURES NOT LISTED AND DO EXCEED DOCUMENT SECURITY INDUSTRY GUIDELINES.

For terms & conditions and to verify this report, please visit [www.igi.org](http://www.igi.org)