



ELECTRONIC COPY

DIAMOND REPORT

| | |
|-------------------------|-----------------------|
| October 7, 2024 | |
| IGI Report Number | 651485297 |
| Description | NATURAL DIAMOND |
| Shape and Cutting Style | ROUND BRILLIANT |
| Measurements | 7.43 - 7.49 X 4.55 MM |

GRADING RESULTS

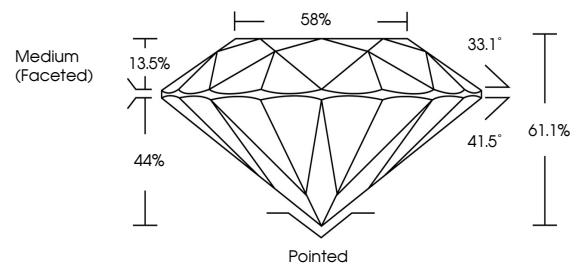
| | |
|---------------|------------|
| Carat Weight | 1.54 CARAT |
| Color Grade | K |
| Clarity Grade | VVS 1 |
| Cut Grade | EXCELLENT |

ADDITIONAL GRADING INFORMATION

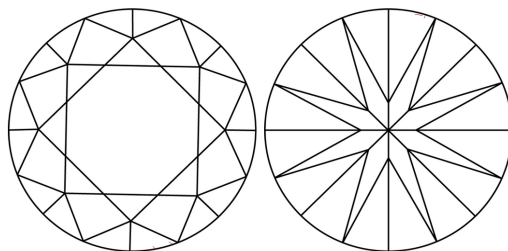
| | |
|-------------------------------------|---|
| Polish | EXCELLENT |
| Symmetry | EXCELLENT |
| Fluorescence | NONE |
| Inscription(s) |  651485297 |
| Comments: IDEAL CUT ROUND BRILLIANT | |

651485297
Report verification at igi.org

PROPORTIONS

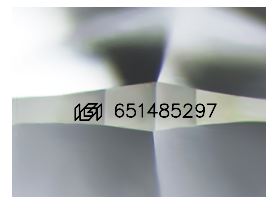


CLARITY CHARACTERISTICS



KEY TO SYMBOLS

Red symbols indicate internal characteristics.
Green symbols indicate external characteristics.



Sample Image Used

COLOR

| D - F | G - J | K - M | N - R | S - Z | FANCY |
|-----------|----------------|-----------------|------------------|-------------|-------|
| Colorless | Near Colorless | Slightly Tinted | Very Light Color | Light Color | |

CLARITY

| IF | VVS ¹⁻² | VS ¹⁻² | SI ¹⁻² | I ¹⁻³ |
|---------------------|-----------------------------|------------------------|-------------------|------------------|
| Internally Flawless | Very Very Slightly Included | Very Slightly Included | Slightly Included | Included |



© IGI 2020, International Gemological Institute

FD - 10 20

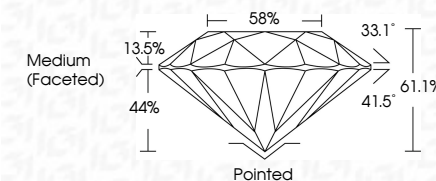
DIAMOND REPORT



| | |
|-------------------------|-----------------------|
| October 7, 2024 | |
| IGI Report Number | 651485297 |
| Description | NATURAL DIAMOND |
| Shape and Cutting Style | ROUND BRILLIANT |
| Measurements | 7.43 - 7.49 X 4.55 MM |

GRADING RESULTS

| | |
|---------------|------------|
| Carat Weight | 1.54 CARAT |
| Color Grade | K |
| Clarity Grade | VVS 1 |
| Cut Grade | EXCELLENT |



ADDITIONAL GRADING INFORMATION

| | |
|-------------------------------------|---------------|
| Polish | EXCELLENT |
| Symmetry | EXCELLENT |
| Fluorescence | NONE |
| Inscription(s) | 18K 651485297 |
| Comments: IDEAL CUT ROUND BRILLIANT | |



October 7, 2024
IGI Report No 651485297
ROUND BRILLIANT

7.43 - 7.49 X 4.55 MM

| | |
|--------------|------------|
| Carat Weight | 1.54 CARAT |
| Color Grade | K |

| Clarity Grade | WS 1 |
|---------------|------|
| Clarity Grade | WS 1 |

| | |
|-----------|-----------|
| Cut Grade | EXCELLENT |
| Depth | 61.1% |

| | 58% |
|--------|-----|
| Table | |
| Girdle | |

Call 800
Medical Illumination

| | |
|--------|-----------|
| Culet | Pointed |
| Polish | EXCELLENT |

| | |
|--------------|-----------|
| Symmetry | EXCELLENT |
| Fluorescence | NONE |

| Inscription(s) | 1891 651485297 |
|----------------|----------------|
| | |

Comments:
IDEAL CUT ROUND BRILLIANT