



**ELECTRONIC COPY**

## DIAMOND REPORT

October 8, 2024	
IGI Report Number	651485337
Description	NATURAL DIAMOND
Shape and Cutting Style	ROUND BRILLIANT
Measurements	6.75 - 6.79 X 4.25 MM

## GRADING RESULTS

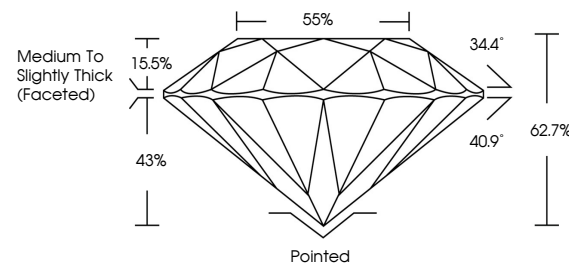
Carat Weight	1.20 CARAT
Color Grade	J
Clarity Grade	VS 2
Cut Grade	EXCELLENT

### ADDITIONAL GRADING INFORMATION

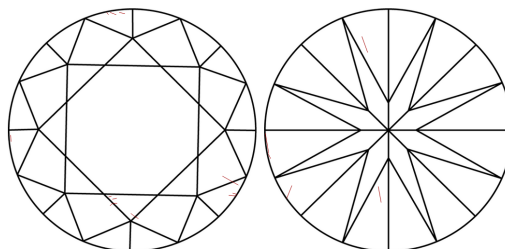
Polish	EXCELLENT
Symmetry	EXCELLENT
Fluorescence	NONE
Inscription(s)	151 651485337

651485337  
Report verification at [igi.org](http://igi.org)

## PROPORTIONS

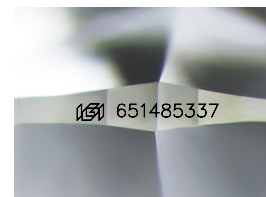


## CLARITY CHARACTERISTICS



### KEY TO SYMBOLS

Red symbols indicate internal characteristics.  
Green symbols indicate external characteristics.



Sample Image Used

**COLOR**

D - F	G - J	K - M	N - R	S - Z	FANCY
Colorless	Near Colorless	Slightly Tinted	Very Light Color	Light Color	

## CLARITY

IF	VVS <sup>1-2</sup>	VS <sup>1-2</sup>	SI <sup>1-2</sup>	I <sup>1-3</sup>
Internally Flawless	Very Very Slightly Included	Very Slightly Included	Slightly Included	Included



© IGI 2020, International Gemological Institute

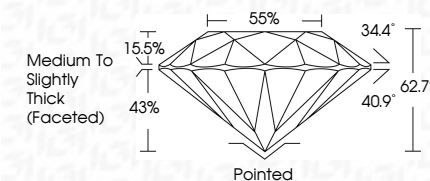
FD - 10 20



October 8, 2024	
IGI Report Number	651485337
Description	NATURAL DIAMOND
Shape and Cutting Style	ROUND BRILLIANT
Measurements	6.75 - 6.79 X 4.25 MM

## GRADING RESULTS

Carat Weight	1.20 CARAT
Color Grade	J
Clarity Grade	VS 2
Cut Grade	EXCELLENT



### ADDITIONAL GRADING INFORMATION

Polish	EXCELLENT
Symmetry	EXCELLENT
Fluorescence	NONE
Inscription(s)	(15) 651485337



October 8, 2024  
IGI Report No 651485337  
ROUND BRILLIANT

Carat Weight	1.20 CARAT
Color Grade	J
Clarity Grade	VS 2
Cut Grade	EXCELLENT
Depth	62.7%
Table	55%
Grade	Medium To Slightly Thick (Faceted)
Culet	Pointed
Polish	EXCELLENT
Symmetry	EXCELLENT
Fluorescence	NONE
Production Co.	JOHN J. JEWELL