



ELECTRONIC COPY

DIAMOND REPORT

October 14, 2024	
IGI Report Number	651485715
Description	NATURAL DIAMOND
Shape and Cutting Style	EMERALD CUT
Measurements	9.55 X 4.93 X 3.34 MM

GRADING RESULTS

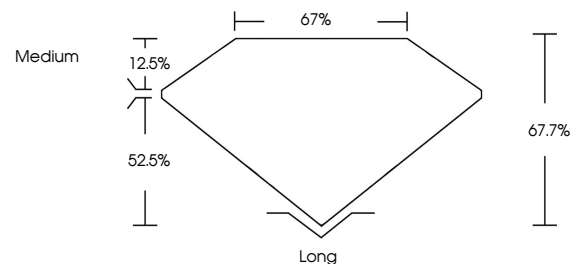
Carat Weight	1.58 CARAT
Color Grade	J
Clarity Grade	VVS 1
Cut Grade	VERY GOOD

ADDITIONAL GRADING INFORMATION

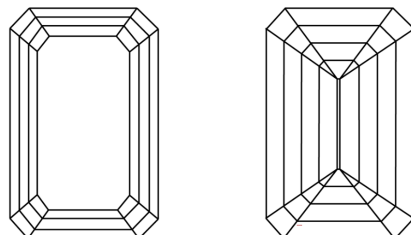
Polish	EXCELLENT
Symmetry	EXCELLENT
Fluorescence	VERY SLIGHT
Inscription(s)	131 651485715

651485715
Report verification at igi.org

PROPORTIONS

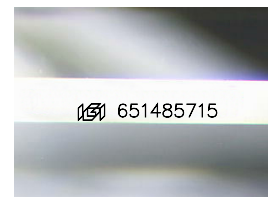


CLARITY CHARACTERISTICS



KEY TO SYMBOLS

Red symbols indicate internal characteristics.
Green symbols indicate external characteristics.



Sample Image Used

COLOR

D - F	G - J	K - M	N - R	S - Z	FANCY
Colorless	Near Colorless	Slightly Tinted	Very Light Color	Light Color	

CLARITY

IF	VVS ¹⁻²	VS ¹⁻²	SI ¹⁻²	I ¹⁻³
Internally Flawless	Very Very Slightly Included	Very Slightly Included	Slightly Included	Included

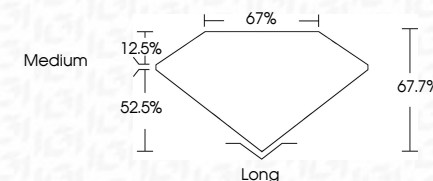
DIAMOND REPORT



October 14, 2024	
IGI Report Number	651485715
Description	NATURAL DIAMOND
Shape and Cutting Style	EMERALD CUT
Measurements	9.55 X 4.93 X 3.34 MM

GRADING RESULTS

Carat Weight	1.58 CARAT
Color Grade	J
Clarity Grade	VVS 1
Cut Grade	VERY GOOD



ADDITIONAL GRADING INFORMATION

Polish	EXCELLENT
Symmetry	EXCELLENT
Fluorescence	VERY SLIGHT
Inscription(s)	151 651485715



© IGI 2020, International Gemological Institute

FD - 10 20



THIS DOCUMENT WAS PRODUCED WITH THE FOLLOWING SECURITY MEASURES: SPECIAL DOCUMENT PAPER, INK SCREENS, WATERMARK, BACKGROUND DESIGNS, HOLOGRAM AND OTHER SECURITY FEATURES NOT LISTED AND DO EXCEED DOCUMENT SECURITY INDUSTRY GUIDELINES

www.igi.org

October 14, 2024
 IGI Report No 651485715
 EMERALD CIT

5.95 X 4.93 X 3.34 MM	Carat Weight	1.58 CARAT
	Color Grade	J
	Clarity Grade	VS1
	Cut Grade	VERY GOOD
	Depth	61.7%
	Table	67%
	Girdle	Medium
	Culet	Long
	Polish	EXCELLENT
	Symmetry	EXCELLENT
	Fluorescence	VERY SLIGHT