



ELECTRONIC COPY

DIAMOND REPORT

December 6, 2024	
IGI Report Number	651485963
Description	NATURAL DIAMOND
Shape and Cutting Style	SQUARE EMERALD CUT
Measurements	5.85 X 5.66 X 3.92 MM

GRADING RESULTS

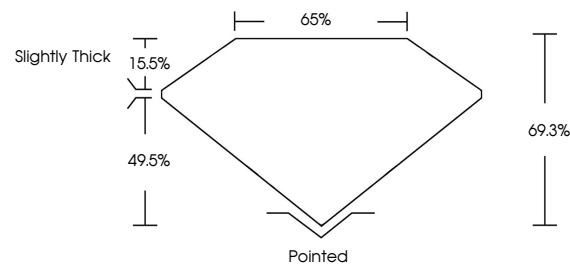
Carat Weight	1.21 CARAT
Color Grade	J
Clarity Grade	VS 1
Cut Grade	VERY GOOD

ADDITIONAL GRADING INFORMATION

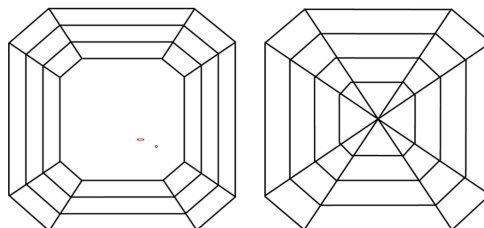
Polish	EXCELLENT
Symmetry	EXCELLENT
Fluorescence	NONE
Inscription(s)	131 651485963

651485963
Report verification at igi.org

PROPORTIONS

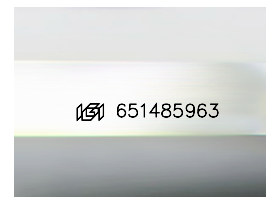


CLARITY CHARACTERISTICS



KEY TO SYMBOLS

Red symbols indicate internal characteristics.
Green symbols indicate external characteristics.



Sample Image Used

COLOR

D - F	G - J	K - M	N - R	S - Z	FANCY
Colorless	Near Colorless	Slightly Tinted	Very Light Color	Light Color	

CLARITY

IF	VS ¹⁻²	VS ¹⁻²	SI ¹⁻²	I ¹⁻³
Internally Flawless	Very Very Slightly Included	Very Slightly Included	Slightly Included	Included

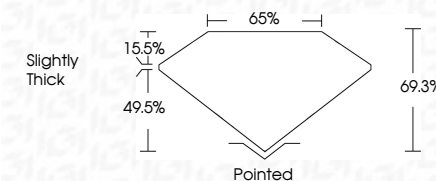
DIAMOND REPORT



December 6, 2024	
IGI Report Number	651485963
Description	NATURAL DIAMOND
Shape and Cutting Style	SQUARE EMERALD CUT
Measurements	5.85 X 5.66 X 3.92 MM

GRADING RESULTS

Carat Weight	1.21 CARAT
Color Grade	J
Clarity Grade	VS 1
Cut Grade	VERY GOOD



ADDITIONAL GRADING INFORMATION

Polish	EXCELLENT
Symmetry	EXCELLENT
Fluorescence	NONE
Inscription(s)	1651485963



© IGI 2020, International Gemological Institute

FD - 10 20



THIS DOCUMENT WAS PRODUCED WITH THE FOLLOWING SECURITY MEASURES: SPECIAL DOCUMENT PAPER, INK SCREENS, WATERMARK, BACKGROUND DESIGNS, HOLOGRAM AND OTHER SECURITY FEATURES NOT LISTED AND DO EXCEED DOCUMENT SECURITY INDUSTRY GUIDELINES

December 6, 2024
IGI Report No 6514895
SQUARE EMERALD CU

1.21 CARAT	J	VS 1	VERY GOOD	69.3%	65%	Slightly Thick	Pointed	EXCELLENT	EXCELLENT	NONE
------------	---	------	-----------	-------	-----	----------------	---------	-----------	-----------	------

Pointed
EXCELLENT
EXCELLENT
NONE