



ELECTRONIC COPY

DIAMOND REPORT

December 18, 2024	
IGI Report Number	651486006
Description	NATURAL DIAMOND
Shape and Cutting Style	CUT CORNERED RECTANGULAR MODIFIED BRILLIANT
Measurements	7.66 X 5.58 X 3.83 MM

GRADING RESULTS

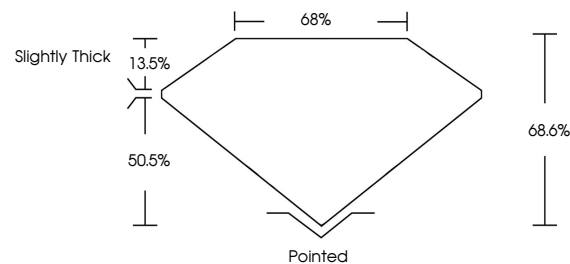
Carat Weight	1.52 CARAT
Color Grade	I
Clarity Grade	SI 2
Cut Grade	VERY GOOD

ADDITIONAL GRADING INFORMATION

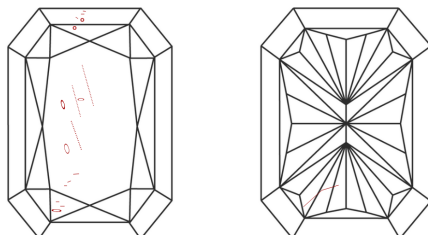
Polish	EXCELLENT
Symmetry	EXCELLENT
Fluorescence	NONE
Inscription(s)	151 651486006

651486006
Report verification at igi.org

PROPORTIONS

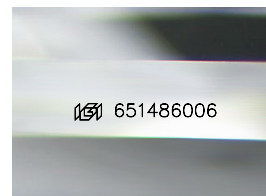


CLARITY CHARACTERISTICS



KEY TO SYMBOLS

Red symbols indicate internal characteristics.
Green symbols indicate external characteristics.



Sample Image Used

COLOR

D - F	G - J	K - M	N - R	S - Z	FANCY
Colorless	Near Colorless	Slightly Tinted	Very Light Color	Light Color	

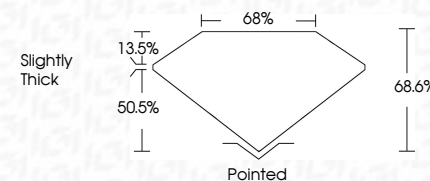
CLARITY

IF	VVS ¹⁻²	VS ¹⁻²	SI ¹⁻²	I ¹⁻³
Internally Flawless	Very Very Slightly Included	Very Slightly Included	Slightly Included	Included

DIAMOND REPORT



December 18, 2024	
IGI Report Number	651486006
Description	NATURAL DIAMOND
Shape and Cutting Style	CUT CORNERED RECTANGULAR MODIFIED BRILLIANT
Measurements	7.66 X 5.58 X 3.83 MM
GRADING RESULTS	
Carat Weight	1.52 CARAT
Color Grade	I
Clarity Grade	SI 2
Cut Grade	VERY GOOD



ADDITIONAL GRADING INFORMATION

Polish	EXCELLENT
Symmetry	EXCELLENT
Fluorescence	NONE
Inscription(s)	1651486006



IG



© IGI 2020, International Gemological Institute

FD - 10 20

www.igi.org



THIS DOCUMENT WAS PRODUCED WITH THE FOLLOWING SECURITY MEASURES: SPECIAL DOCUMENT PAPER, INK SCREENS, WATERMARK, BACKGROUND DESIGNS, HOLOGRAM AND OTHER SECURITY FEATURES NOT LISTED AND DO EXCEED DOCUMENT SECURITY INDUSTRY GUIDELINE

December 18, 2024	Color Grade	1.62 CARAT	<p>VERY GOOD 66.0% 66% Slightly Thick</p>	<p>Pointed EXCELLENT EXCELLENT NONE 50% 65% 100%</p>
GJ Report No. 651464006	Clarity Grade	S12		
CUT CORNERED RECT. MODIFIED BRILLIANT	Carat Weight	1.62 CARAT		
6.65 X 5.58 X 3.83 MM	Color	I		
	Carat Weight	1.62 CARAT		
	Clarity	Very Good	<p>VERY GOOD 66.0% 66% Slightly Thick</p>	<p>Pointed EXCELLENT EXCELLENT NONE 50% 65% 100%</p>
	Depth	S12		
	Table	66.0%		
	Girdle	Slightly Thick		
	Culet	Pointed		
	Polish	Excellent	<p>VERY GOOD 66.0% 66% Slightly Thick</p>	<p>Pointed EXCELLENT EXCELLENT NONE 50% 65% 100%</p>
	Symmetry	Excellent		
	Fluorescence	None		
	Measurements	6.65 X 5.58 X 3.83 MM		
	Comments	Color Grade: I, Clarity Grade: S12, Carat Weight: 1.62 CARAT		