



ELECTRONIC COPY

DIAMOND REPORT

October 12, 2024	
IGI Report Number	654415980
Description	NATURAL DIAMOND
Shape and Cutting Style	ROUND BRILLIANT
Measurements	6.80 - 6.85 X 4.24 MM

GRADING RESULTS

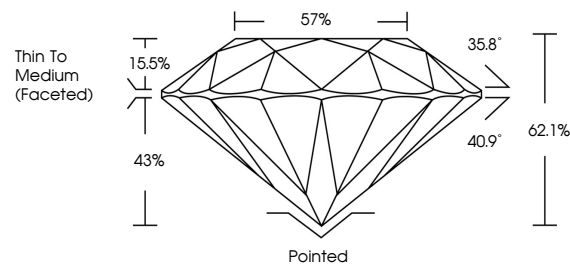
Carat Weight	1.22 CARAT
Color Grade	J
Clarity Grade	VS 2
Cut Grade	EXCELLENT

ADDITIONAL GRADING INFORMATION

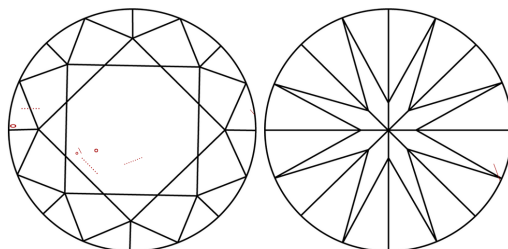
Polish	EXCELLENT
Symmetry	EXCELLENT
Fluorescence	NONE
Inscription(s)	 654415980
Comments: IDEAL CUT ROUND BRILLIANT	

654415980
Report verification at igi.org

PROPORTIONS

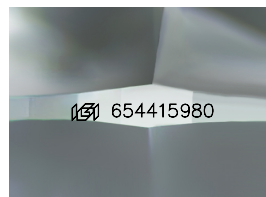


CLARITY CHARACTERISTICS



KEY TO SYMBOLS

Red symbols indicate internal characteristics.
Green symbols indicate external characteristics.



Sample Image Used

COLOR

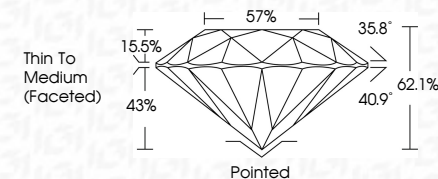
D - F	G - J	K - M	N - R	S - Z	FANCY
Colorless	Near Colorless	Slightly Tinted	Very Light Color	Light Color	

CLARITY

IF	VVS ¹⁻²	VS ¹⁻²	SI ¹⁻²	I ¹⁻³
Internally Flawless	Very Very Slightly Included	Very Slightly Included	Slightly Included	Included



October 12, 2024	
IGI Report Number	654415980
Description	NATURAL DIAMOND
Shape and Cutting Style	ROUND BRILLIANT
Measurements	6.80 - 6.85 X 4.24 MM
GRADING RESULTS	
Carat Weight	1.22 CARAT
Color Grade	J
Clarity Grade	VS 2
Cut Grade	EXCELLENT



ADDITIONAL GRADING INFORMATION

Polish	EXCELLENT
Symmetry	EXCELLENT
Fluorescence	NONE
Inscription(s)	(G) 654415900
Comments: IDEAL CUT ROUND BRILLIANT	



IGI



© IGI 2020, International Gemological Institute

FD - 10 20

www.igi.org



THIS DOCUMENT WAS PRODUCED WITH THE FOLLOWING SECURITY MEASURES: SPECIAL DOCUMENT PAPER, INK SCREENS, WATERMARK, BACKGROUND DESIGNS, HOLOGRAM AND OTHER SECURITY FEATURES NOT LISTED AND DO EXCEED DOCUMENT SECURITY INDUSTRY GUIDELINES

October 12, 2024
 IGI Report No 654415980
 SOUNDING BRILLIANT

G680 - G85 X 4.24 MM	VS 2	1.22 CARAT
Carat Weight	EXCELLENT	J
Color Grade	62.1%	
	57%	
	Thin To Medium Faceted)	
Clarity Grade	Poited	
Cut Grade	EXCELLENT	
Depth	EXCELLENT	
Table	NONE	
Girdle	near /55-61/59%	
Symmetry		
Fluorescence		
Inscriptions(s)		

Comments:
IDEAL CUT ROUND BRILLIANT