



ELECTRONIC COPY

DIAMOND REPORT

October 12, 2024	
IGI Report Number	654415991
Description	NATURAL DIAMOND
Shape and Cutting Style	ROUND BRILLIANT
Measurements	6.41 - 6.44 X 3.95 MM

GRADING RESULTS

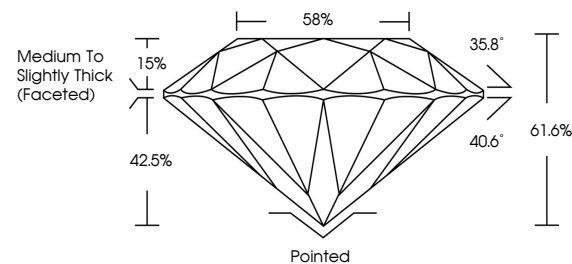
Carat Weight	1.01 CARAT
Color Grade	J
Clarity Grade	SI 1
Cut Grade	EXCELLENT

ADDITIONAL GRADING INFORMATION

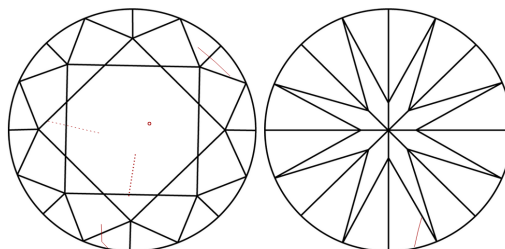
Polish	EXCELLENT
Symmetry	EXCELLENT
Fluorescence	NONE
Inscription(s)	 654415991
Comments: IDEAL CUT ROUND BRILLIANT	

654415991
Report verification at igi.org

PROPORTIONS

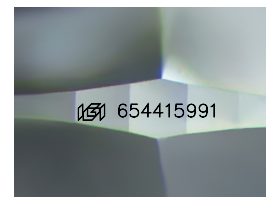


CLARITY CHARACTERISTICS



KEY TO SYMBOLS

Red symbols indicate internal characteristics.
Green symbols indicate external characteristics.



Sample Image Used

COLOR

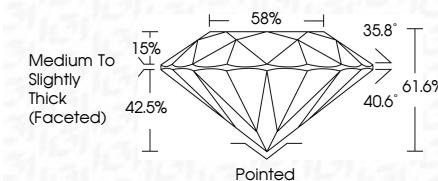
D - F	G - J	K - M	N - R	S - Z	FANCY
Colorless	Near Colorless	Slightly Tinted	Very Light Color	Light Color	

CLARITY

IF	VVS ¹⁻²	VS ¹⁻²	SI ¹⁻²	I ¹⁻³
Internally Flawless	Very Very Slightly Included	Very Slightly Included	Slightly Included	Included



October 12, 2024	
IGI Report Number	654415991
Description	NATURAL DIAMOND
Shape and Cutting Style	ROUND BRILLIANT
Measurements	6.41 - 6.44 X 3.95 MM
GRADING RESULTS	
Carat Weight	1.01 CARAT
Color Grade	J
Clarity Grade	SI 1
Cut Grade	EXCELLENT



ADDITIONAL GRADING INFORMATION

Polish	EXCELLENT
Symmetry	EXCELLENT
Fluorescence	NONE
Inscription(s)	 654415991
Comments: IDEAL CUT ROUND BRILLIANT	



© IGI 2020, International Gemological Institute

FD - 10 20



THIS DOCUMENT WAS PRODUCED WITH THE FOLLOWING SECURITY MEASURES: SPECIAL DOCUMENT PAPER, INK SCREENS, WATERMARK, BACKGROUND DESIGNS, HOLOGRAM AND OTHER SECURITY FEATURES NOT LISTED AND DO EXCEED DOCUMENT SECURITY INDUSTRY GUIDELINES

www.igi.org

<p>October 12, 2024</p> <p>GI Report No. 654415991</p> <p>ROUND BRILLIANT</p>	<p>Carat Weight</p> <p>Color Grade</p> <p>Clarity Grade</p> <p>Cut Grade</p> <p>Depth</p> <p>Girdle</p> <p>Table</p> <p>Side</p>	<p>Med</p> <p>IT</p>	<p>Culet</p> <p>Polish</p> <p>Symmetry</p> <p>Fluorescence</p> <p>Inscription(s)</p>	<p>Comments:</p> <p>IDEAL CUT ROUND BRILLIANT</p>
---	--	----------------------	--	---