



**ELECTRONIC COPY**

## DIAMOND REPORT

October 17, 2024	
IGI Report Number	654416395
Description	NATURAL DIAMOND
Shape and Cutting Style	ROUND BRILLIANT
Measurements	7.08 - 7.15 X 4.61 MM

## GRADING RESULTS

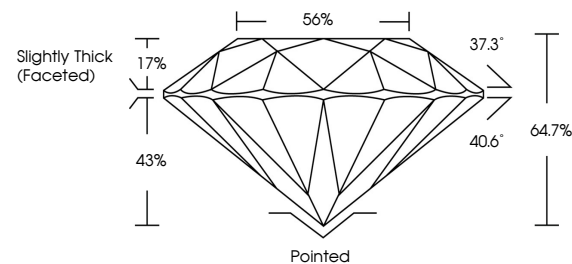
Carat Weight	1.50 CARAT
Color Grade	J
Clarity Grade	SI 1
Cut Grade	VERY GOOD

### ADDITIONAL GRADING INFORMATION

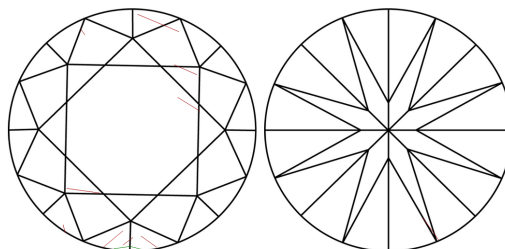
Polish	EXCELLENT
Symmetry	VERY GOOD
Fluorescence	NONE
Inscription(s)	151 654416395

654416395  
Report verification at [igi.org](https://igi.org)

## PROPORTIONS

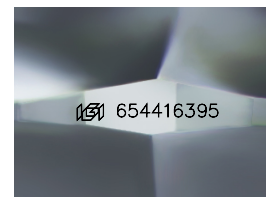


## CLARITY CHARACTERISTICS



### KEY TO SYMBOLS

Red symbols indicate internal characteristics.  
Green symbols indicate external characteristics.



Sample Image Used

**COLOR**

D - F	G - J	K - M	N - R	S - Z	FANCY
Colorless	Near Colorless	Slightly Tinted	Very Light Color	Light Color	

## CLARITY

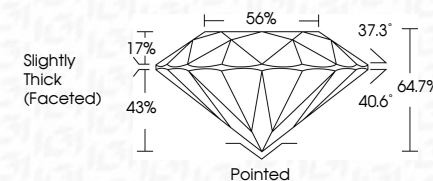
IF	VVS <sup>1-2</sup>	VS <sup>1-2</sup>	SI <sup>1-2</sup>	I <sup>1-3</sup>
Internally Flawless	Very Very Slightly Included	Very Slightly Included	Slightly Included	Included



October 17, 2024	
IGI Report Number	654416395
Description	NATURAL DIAMOND
Shape and Cutting Style	ROUND BRILLIANT
Measurements	7.08 - 7.15 X 4.61 MM

## GRADING RESULTS

Carat Weight	1.50 CARAT
Color Grade	J
Clarity Grade	SI 1
Cut Grade	VERY GOOD



### ADDITIONAL GRADING INFORMATION

Polish	EXCELLENT
Symmetry	VERY GOOD
Fluorescence	NONE
Inscription(s)	151 654416395



© IGI 2020, International Gemological Institute

FD - 10 20

**www.igi.org**



THIS DOCUMENT WAS PRODUCED WITH THE FOLLOWING SECURITY MEASURES: SPECIAL DOCUMENT PAPER, INK SCREENS, WATERMARK, BACKGROUND DESIGNS, HOLOGRAM AND OTHER SECURITY FEATURES NOT LISTED AND DO EXCEED DOCUMENT SECURITY INDUSTRY GUIDELINE

October 17, 2024  
GI Report No 654416395  
ROUND BRILLIANT

ROUND BRILLIANT	7.08 - 7.15 X 4.61 MM	1.50 CARAT
	Carat Weight	J
	Color Grade	
	Clarity Grade	S1
	Cut Grade	VERY GOOD
	Depth	64.7%
	Table	56%
	Grade	Slightly Thick (Excellent)

	Pointed	EXCELLENT	VERY GOOD	NONE
Culet				
Polish				
Symmetry				
Fluorescence				
Coloration(c)				