



ELECTRONIC COPY

DIAMOND REPORT

October 17, 2024	
IGI Report Number	654416409
Description	NATURAL DIAMOND
Shape and Cutting Style	ROUND BRILLIANT
Measurements	6.56 - 6.61 X 4.02 MM

GRADING RESULTS

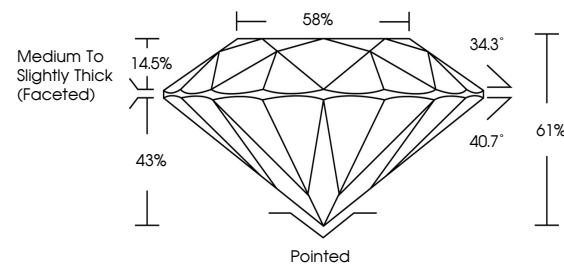
Carat Weight	1.07 CARAT
Color Grade	J
Clarity Grade	SI 1
Cut Grade	EXCELLENT

ADDITIONAL GRADING INFORMATION

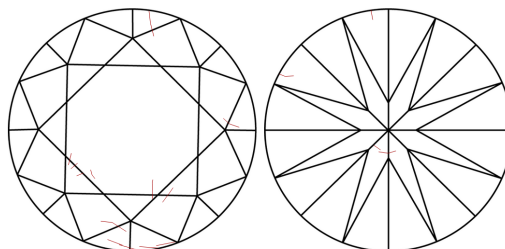
Polish	EXCELLENT
Symmetry	EXCELLENT
Fluorescence	NONE
Inscription(s)	 654416409
Comments: IDEAL CUT ROUND BRILLIANT	

654416409
Report verification at igi.org

PROPORTIONS

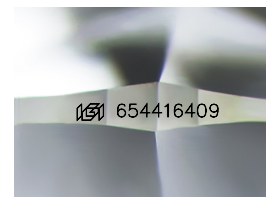


CLARITY CHARACTERISTICS



KEY TO SYMBOLS

Red symbols indicate internal characteristics.
Green symbols indicate external characteristics.



Sample Image Used

COLOR

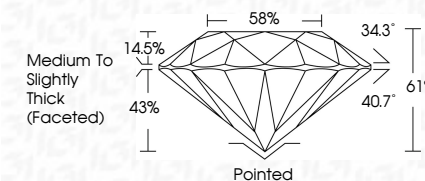
D - F	G - J	K - M	N - R	S - Z	FANCY
Colorless	Near Colorless	Slightly Tinted	Very Light Color	Light Color	

CLARITY

IF	VVS ¹⁻²	VS ¹⁻²	SI ¹⁻²	I ¹⁻³
Internally Flawless	Very Very Slightly Included	Very Slightly Included	Slightly Included	Included



October 17, 2024	
IGI Report Number	654416409
Description	NATURAL DIAMOND
Shape and Cutting Style	ROUND BRILLIANT
Measurements	6.56 - 6.61 X 4.02 MM
GRADING RESULTS	
Carat Weight	1.01 CARAT
Color Grade	J
Clarity Grade	SI 1
Cut Grade	EXCELLENT



ADDITIONAL GRADING INFORMATION

Polish	EXCELLENT
Symmetry	EXCELLENT
Fluorescence	NONE
Inscription(s)	(G) 654416409
Comments: IDEAL CUT ROUND BRILLIANT	



IG



© IGI 2020, International Gemological Institute

FD - 10 20



THIS DOCUMENT WAS PRODUCED WITH THE FOLLOWING SECURITY MEASURES: SPECIAL DOCUMENT PAPER, INK SCREENS, WATERMARK, BACKGROUND DESIGNS, HOLOGRAM AND OTHER SECURITY FEATURES NOT LISTED AND DO EXCEED DOCUMENT SECURITY INDUSTRY GUIDELINE

www.igi.org

October 17, 2024
 IGI Report No. 65416409
 ROUND BRILLIANT

5.95 - 6.61 X 4.02 MM

Carat Weight
 Color Grade
 Clarity Grade
 Cut Grade
 Depth
 Table
 Girdle
 Culet
 Polish
 Symmetry
 Fluorescence
 Inscription(s)

Med
 IT

Comments:
 IDEAL CUT ROUND BRILLIANT