



ELECTRONIC COPY

DIAMOND REPORT

November 13, 2024	
IGI Report Number	654416528
Description	NATURAL DIAMOND
Shape and Cutting Style	ROUND BRILLIANT
Measurements	6.41 - 6.44 X 3.96 MM

GRADING RESULTS

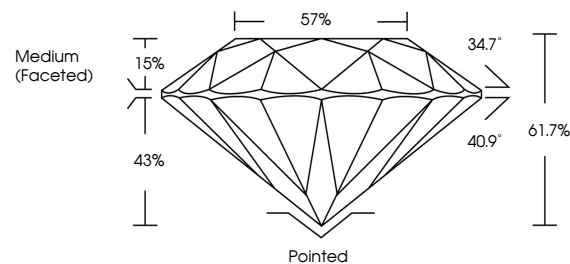
Carat Weight	1.00 CARAT
Color Grade	J
Clarity Grade	SI 1
Cut Grade	EXCELLENT

ADDITIONAL GRADING INFORMATION

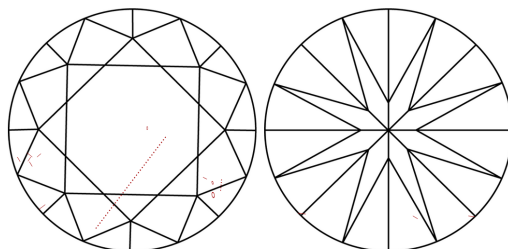
Polish	EXCELLENT
Symmetry	EXCELLENT
Fluorescence	NONE
Inscription(s)	 654416528
Comments: IDEAL CUT ROUND BRILLIANT	

654416528
Report verification at igi.org

PROPORTIONS

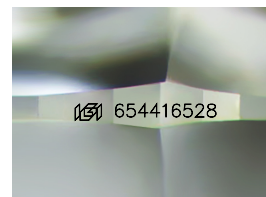


CLARITY CHARACTERISTICS



KEY TO SYMBOLS

Red symbols indicate internal characteristics.
Green symbols indicate external characteristics.



Sample Image Used

COLOR

D - F	G - J	K - M	N - R	S - Z	FANCY
Colorless	Near Colorless	Slightly Tinted	Very Light Color	Light Color	

CLARITY

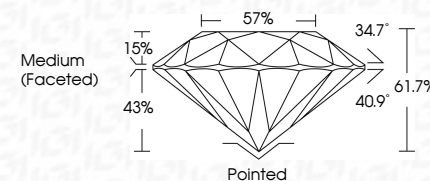
IF	VVS ¹⁻²	VS ¹⁻²	SI ¹⁻²	I ¹⁻³
Internally Flawless	Very Very Slightly Included	Very Slightly Included	Slightly Included	Included



November 13, 2024	
IGI Report Number	654416528
Description	NATURAL DIAMOND
Shape and Cutting Style	ROUND BRILLIANT
Measurements	6.41 - 6.44 X 3.96 MM

GRADING RESULTS

Carat Weight	1.00 CARAT
Color Grade	J
Clarity Grade	SI 1
Cut Grade	EXCELLENT



ADDITIONAL GRADING INFORMATION

Polish	EXCELLENT
Symmetry	EXCELLENT
Fluorescence	NONE
Inscription(s)	 654416528
Comments: IDEAL CUT ROUND BRILLIANT	



© IGI 2020, International Gemological Institute

FD - 10 20



THIS DOCUMENT WAS PRODUCED WITH THE FOLLOWING SECURITY MEASURES: SPECIAL DOCUMENT PAPER, INK SCREENS, WATERMARK, BACKGROUND DESIGNS, HOLOGRAM AND OTHER SECURITY FEATURES NOT LISTED AND DO EXCEED DOCUMENT SECURITY INDUSTRY GUIDELINES

November 13, 2024
IGI Report No 654416528
ROUND BRILLIANT

6.01 - 6.44 X 3.95 MM	Carat Weight	1.00 CARAT
Color Grade	J	
Clarity Grade	S1	
Cut Grade	EXCEL	
Depth	61.7%	
Table	57%	
Grade	Medium Faceted	
Culet	Pointed	
Polish	EXCEL	
Symmetry	EXCEL	
Fluorescence	NONE	
Inscription(s)	see 45414599	

Comments:
IDEAL CUT ROUND BRILLIANT

www.igi.org