



ELECTRONIC COPY

DIAMOND REPORT

November 28, 2024	
IGI Report Number	654416649
Description	NATURAL DIAMOND
Shape and Cutting Style	ROUND BRILLIANT
Measurements	6.39 - 6.44 X 3.96 MM

GRADING RESULTS

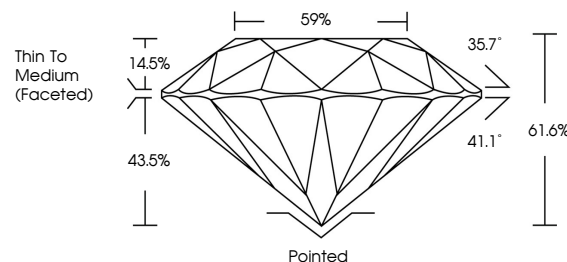
Carat Weight	1.01 CARAT
Color Grade	I
Clarity Grade	SI 1
Cut Grade	EXCELLENT

ADDITIONAL GRADING INFORMATION

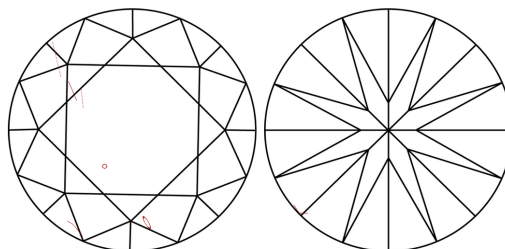
Polish	EXCELLENT
Symmetry	EXCELLENT
Fluorescence	NONE
Inscription(s)	 654416649
Comments: IDEAL CUT ROUND BRILLIANT	

654416649
Report verification at [igi.org](https://www.igi.org)

PROPORTIONS

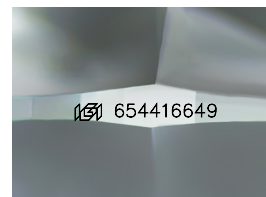


CLARITY CHARACTERISTICS



KEY TO SYMBOLS

Red symbols indicate internal characteristics.
Green symbols indicate external characteristics.



Sample Image Used

COLOR

D - F	G - J	K - M	N - R	S - Z	FANCY
Colorless	Near Colorless	Slightly Tinted	Very Light Color	Light Color	

CLARITY

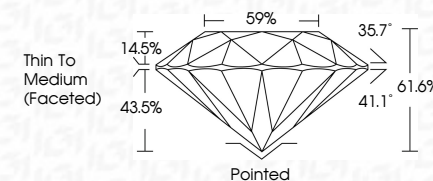
IF	VVS ¹⁻²	VS ¹⁻²	SI ¹⁻²	I ¹⁻³
Internally Flawless	Very Very Slightly Included	Very Slightly Included	Slightly Included	Included



November 28, 2024	
IGI Report Number	654416649
Description	NATURAL DIAMOND
Shape and Cutting Style	ROUND BRILLIANT
Measurements	6.39 - 6.44 X 3.96 MM

GRADING RESULTS

Carat Weight	1.01 CARAT
Color Grade	I
Clarity Grade	SI 1
Cut Grade	EXCELLENT



ADDITIONAL GRADING INFORMATION

Polish	EXCELLENT
Symmetry	EXCELLENT
Fluorescence	NONE
Inscription(s)	 654416649
Comments: IDEAL CUT ROUND BRILLIANT	



IG



© IGI 2020, International Gemological Institute

FD - 10 20



THIS DOCUMENT WAS PRODUCED WITH THE FOLLOWING SECURITY MEASURES: SPECIAL DOCUMENT PAPER, INK SCREENS, WATERMARK, BACKGROUND DESIGNS, HOLOGRAM AND OTHER SECURITY FEATURES NOT LISTED AND DO EXCEED DOCUMENT SECURITY INDUSTRY GUIDELINES

November 28, 2024
GI Report No 65416649
ROUND BRILLIANT

5.39 - 6.44 X 3.93 MM	1.01 CARAT	
Color		S1
Carat Weight	EXCELLENT	61.6%
Color Grade		59%
Clarity Grade		Thin To Medium (faceted)
Cut Grade		Pointed
Depth		EXCELLENT
Table		EXCELLENT
Girdle		NONE
Fluorescence		see 554116490
Proportions (%)		

Comments:
DEAL CUT ROUND BRILLIANT