



ELECTRONIC COPY

DIAMOND REPORT

December 18, 2024	
IGI Report Number	654416725
Description	NATURAL DIAMOND
Shape and Cutting Style	ROUND BRILLIANT
Measurements	6.42 - 6.47 X 3.93 MM

GRADING RESULTS

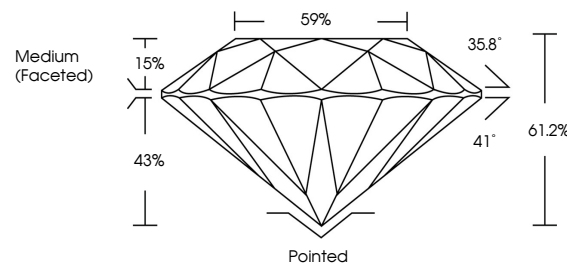
Carat Weight	1.00 CARAT
Color Grade	I
Clarity Grade	VS 2
Cut Grade	EXCELLENT

ADDITIONAL GRADING INFORMATION

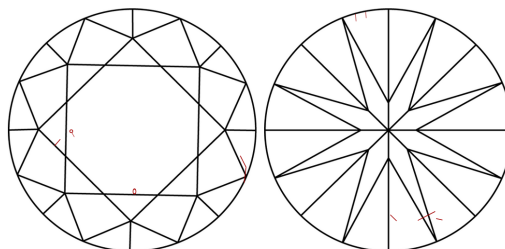
Polish	EXCELLENT
Symmetry	EXCELLENT
Fluorescence	NONE
Inscription(s)	 654416725
Comments: IDEAL CUT ROUND BRILLIANT	

654416725
Report verification at igi.org

PROPORTIONS

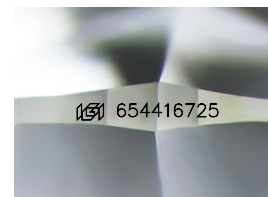


CLARITY CHARACTERISTICS



KEY TO SYMBOLS

Red symbols indicate internal characteristics.
Green symbols indicate external characteristics.



Sample Image Used

COLOR

D - F	G - J	K - M	N - R	S - Z	FANCY
Colorless	Near Colorless	Slightly Tinted	Very Light Color	Light Color	

CLARITY

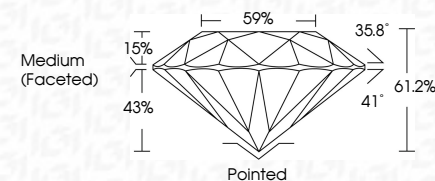
IF	VVS ¹⁻²	VS ¹⁻²	SI ¹⁻²	I ¹⁻³
Internally Flawless	Very Very Slightly Included	Very Slightly Included	Slightly Included	Included



December 18, 2024	
IGI Report Number	654416725
Description	NATURAL DIAMOND
Shape and Cutting Style	ROUND BRILLIANT
Measurements	6.42 - 6.47 X 3.93 MM

GRADING RESULTS

Carat Weight	1.00 CARAT
Color Grade	I
Clarity Grade	VS 2
Cut Grade	EXCELLENT



ADDITIONAL GRADING INFORMATION

Polish	EXCELLENT
Symmetry	EXCELLENT
Fluorescence	NONE
Inscription(s)	(G) 654416725
Comments: IDEAL CUT ROUND BRILLIANT	



© IGI 2020, International Gemological Institute

FD - 10 20

www.igi.org



THIS DOCUMENT WAS PRODUCED WITH THE FOLLOWING SECURITY MEASURES: SPECIAL DOCUMENT PAPER, INK SCREENS, WATERMARK BACKGROUND DESIGNS, HOLOGRAM AND OTHER SECURITY FEATURES NOT LISTED AND DO EXCEED DOCUMENT SECURITY INDUSTRY GUIDELINES

December 18, 2024
IGI Report No 65416725
ROUND BRILLIANT

6.42 - 6.47 X 3.93 MM	Carat Weight	1.00 CARAT
	Color Grade	I
	Clarity Grade	VS 2
	Cut Grade	EXCELLENT
	Depth	61.2%
	Table	59%
	Girdle	Medium (Faceted)
	Culet	Pointed
	Polish	EXCELLENT
	Symmetry	EXCELLENT
	Fluorescence	NONE
	Inspection	gem 454141275

Comments: