



**ELECTRONIC COPY**

## DIAMOND REPORT

October 8, 2024	
IGI Report Number	654475770
Description	NATURAL DIAMOND
Shape and Cutting Style	ROUND BRILLIANT
Measurements	6.19 - 6.26 X 4.01 MM

## GRADING RESULTS

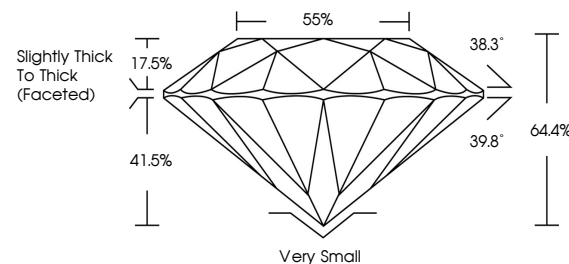
Carat Weight	1.01 CARAT
Color Grade	J
Clarity Grade	VVS 2
Cut Grade	VERY GOOD

### ADDITIONAL GRADING INFORMATION

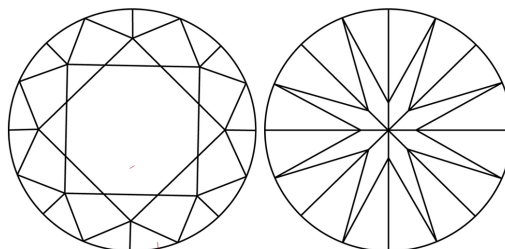
Polish	EXCELLENT
Symmetry	EXCELLENT
Fluorescence	NONE
Inscription(s)	151 654475770

654475770  
Report verification at [igi.org](http://igi.org)

## PROPORTIONS

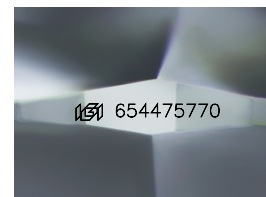


## CLARITY CHARACTERISTICS



## KEY TO SYMBOLS

Red symbols indicate internal characteristics.  
Green symbols indicate external characteristics.



Sample Image Used

**COLOR**

D - F	G - J	K - M	N - R	S - Z	FANCY
Colorless	Near Colorless	Slightly Tinted	Very Light Color	Light Color	

## CLARITY

IF	VVS <sup>1-2</sup>	VS <sup>1-2</sup>	SI <sup>1-2</sup>	I <sup>1-3</sup>
Internally Flawless	Very Very Slightly Included	Very Slightly Included	Slightly Included	Included



© IGI 2020, International Gemological Institute

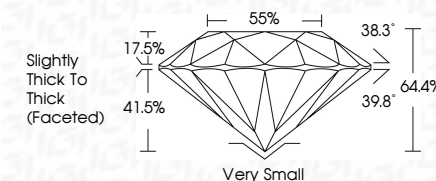
FD - 10 20



October 8, 2024	
IGI Report Number	654475770
Description	NATURAL DIAMOND
Shape and Cutting Style	ROUND BRILLIANT
Measurements	6.19 - 6.26 X 4.01 MM

## GRADING RESULTS

Carat Weight	1.01 CARAT
Color Grade	J
Clarity Grade	VVS 2
Cut Grade	VERY GOOD



### ADDITIONAL GRADING INFORMATION

Polish	EXCELLENT
Symmetry	EXCELLENT
Fluorescence	NONE
Inscription(s)	1561 654475770



October 8, 2024  
IGI Report No 654475770  
ROUND BRILLIANT

ROUND BRILLIANT		VS 2	1.01 CARAT	
Weight	VS 2	1.01 CARAT		
Color	VERY GOOD			
Clarity	64.4%			
Cut	55%			
Depth	Slightly Thick to Thick (rounded)			
Table				
Girdle				
Culet	Very Small			
Polish	EXCELLENT			
Symmetry	EXCELLENT			
Fluorescence	NONE			
Inspection(s)	see 154470770			

**www.igi.org**

THIS DOCUMENT WAS PRODUCED WITH THE FOLLOWING SECURITY MEASURES: SPECIAL DOCUMENT PAPER, INK SCREENS, WATERMARK, BACKGROUND DESIGNS, HOLOGRAM AND OTHER SECURITY FEATURES NOT LISTED AND DO EXCEED DOCUMENT SECURITY INDUSTRY GUIDELINES