



ELECTRONIC COPY

654481206
Report verification at igi.org

DIAMOND REPORT

October 18, 2024
IGI Report Number **654481206**
Description **NATURAL DIAMOND**
Shape and Cutting Style **ROUND BRILLIANT**
Measurements **7.25 - 7.28 X 4.57 MM**

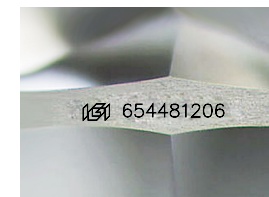
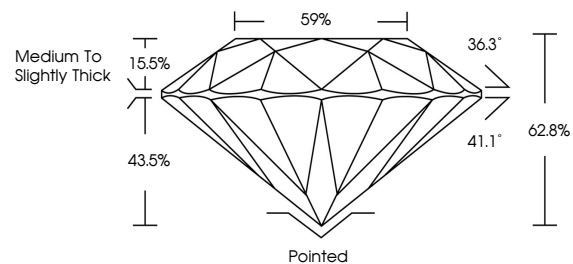
GRADING RESULTS

Carat Weight **1.50 CARAT**
Color Grade **G-R**
Clarity Grade **SI 1**
Cut Grade **EXCELLENT**

ADDITIONAL GRADING INFORMATION

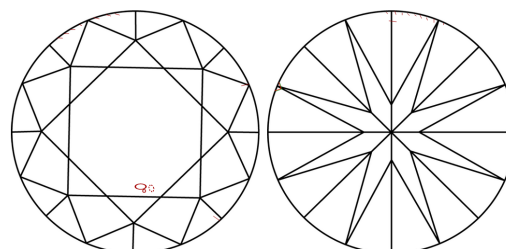
Polish **EXCELLENT**
Symmetry **EXCELLENT**
Fluorescence **NONE**
Inscription(s) **654481206**

PROPORTIONS



Sample Image Used

CLARITY CHARACTERISTICS



KEY TO SYMBOLS

Red symbols indicate internal characteristics.
Green symbols indicate external characteristics.

COLOR

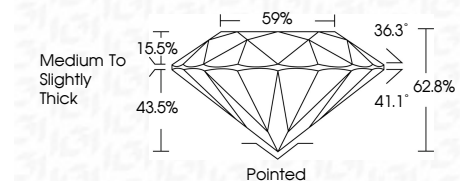
D - F	G - J	K - M	N - R	S - Z	FANCY
Colorless	Near Colorless	Slightly Tinted	Very Light Color	Light Color	

CLARITY

IF	VVS ¹⁻²	VS ¹⁻²	SI ¹⁻²	I ¹⁻³
Internally Flawless	Very Very Slightly Included	Very Slightly Included	Slightly Included	Included



October 18, 2024
IGI Report Number **654481206**
Description **NATURAL DIAMOND**
Shape and Cutting Style **ROUND BRILLIANT**
Measurements **7.25 - 7.28 X 4.57 MM**
GRADING RESULTS
Carat Weight **1.50 CARAT**
Color Grade **G-R**
Clarity Grade **SI 1**
Cut Grade **EXCELLENT**



ADDITIONAL GRADING INFORMATION

Polish **EXCELLENT**
Symmetry **EXCELLENT**
Fluorescence **NONE**
Inscription(s) **654481206**



IGI

October 18, 2024
IGI Report No. 654481206
ROUND BRILLIANT
7.25 - 7.28 X 4.57 MM
1.50 CARAT
G-R
Color Grade
SI 1
Clarity Grade
EXCELLENT
62.8%
59%
Medium To Slightly Thick
Pointed
EXCELLENT
EXCELLENT
NONE
IGI 654481206