



# INTERNATIONAL GEMOLOGICAL INSTITUTE

## DIAMOND REPORT

December 19, 2024

IGI Report Number

657456875

Description

NATURAL DIAMOND

Shape and Cutting Style

ROUND BRILLIANT

Measurements

4.36 - 4.39 X 2.72 MM

## GRADING RESULTS

Carat Weight

0.32 CARAT

Color Grade

G

Clarity Grade

VVS 2

Cut Grade

EXCELLENT

## ADDITIONAL GRADING INFORMATION

Polish

EXCELLENT

Symmetry

EXCELLENT

Fluorescence

VERY SLIGHT

Identification Features

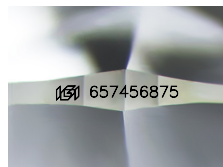
FEATHER, ETCH CHANNEL

Inscription(s)

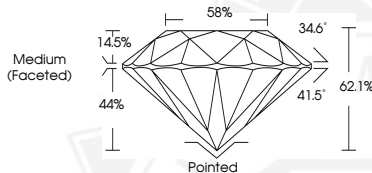
IGI 657456875

Comments: IDEAL CUT ROUND BRILLIANT

ELECTRONIC COPY



Sample Image Used



December 19, 2024

IGI Report Number 657456875

ROUND BRILLIANT

NATURAL DIAMOND

4.36 - 4.39 X 2.72 MM

Carat Weight 0.32 CARAT

Color Grade G

Clarity Grade VVS 2

Cut Grade EXCELLENT

Polish EXCELLENT

Symmetry EXCELLENT

Fluorescence VERY SLIGHT

Inscription(s) IGI 657456875

Comments: IDEAL CUT ROUND

BRILLIANT



December 19, 2024

IGI Report Number 657456875

ROUND BRILLIANT

NATURAL DIAMOND

4.36 - 4.39 X 2.72 MM

Carat Weight 0.32 CARAT

Color Grade G

Clarity Grade VVS 2

Cut Grade EXCELLENT

Polish EXCELLENT

Symmetry EXCELLENT

Fluorescence VERY SLIGHT

Inscription(s) IGI 657456875

Comments: IDEAL CUT ROUND

BRILLIANT



THIS DOCUMENT WAS PRODUCED WITH THE FOLLOWING SECURITY MEASURES: SPECIAL DOCUMENT PAPER, INK SCREENS, WATERMARK, BACKGROUND DESIGN, HOLOGRAM AND OTHER SECURITY FEATURES NOT LISTED AND DO EXCEED DOCUMENT SECURITY INDUSTRY GUIDELINES.

For terms & conditions and to verify this report, please visit [www.igi.org](http://www.igi.org)