



ELECTRONIC COPY

DIAMOND REPORT

November 15, 2024	
IGI Report Number	657457922
Description	NATURAL DIAMOND
Shape and Cutting Style	ROUND BRILLIANT
Measurements	7.30 - 7.34 X 4.58 MM

GRADING RESULTS

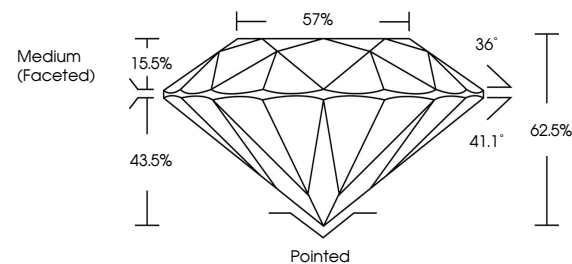
Carat Weight	1.51 CARAT
Color Grade	L
Clarity Grade	VS 1
Cut Grade	EXCELLENT

ADDITIONAL GRADING INFORMATION

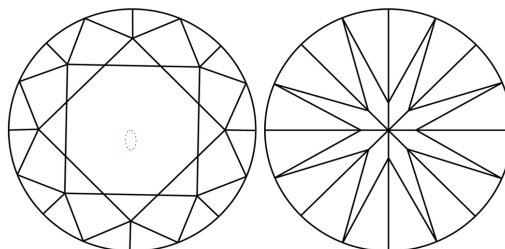
Polish	EXCELLENT
Symmetry	EXCELLENT
Fluorescence	NONE
Inscription(s)	 657457922
Comments: IDEAL CUT ROUND BRILLIANT	

657457922
Report verification at igi.org

PROPORTIONS

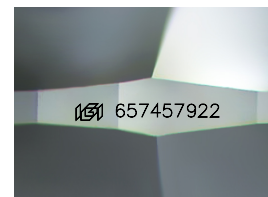


CLARITY CHARACTERISTICS



KEY TO SYMBOLS

Red symbols indicate internal characteristics.
Green symbols indicate external characteristics.



Sample Image Used

COLOR

D - F	G - J	K - M	N - R	S - Z	FANCY
Colorless	Near Colorless	Slightly Tinted	Very Light Color	Light Color	

CLARITY

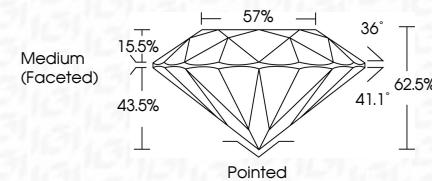
IF	VVS ¹⁻²	VS ¹⁻²	SI ¹⁻²	I ¹⁻³
Internally Flawless	Very Very Slightly Included	Very Slightly Included	Slightly Included	Included



November 15, 2024	
IGI Report Number	657457922
Description	NATURAL DIAMOND
Shape and Cutting Style	ROUND BRILLIANT
Measurements	7.30 - 7.34 X 4.58 MM

GRADING RESULTS

Carat Weight	1.51 CARAT
Color Grade	L
Clarity Grade	VS 1
Cut Grade	EXCELLENT



ADDITIONAL GRADING INFORMATION

Polish	EXCELLENT
Symmetry	EXCELLENT
Fluorescence	NONE
Inscription(s)	(G) 657457922
Comments: IDEAL CUT ROUND BRILLIANT	



© IGI 2020, International Gemological Institute

FD - 10 20



THIS DOCUMENT WAS PRODUCED WITH THE FOLLOWING SECURITY MEASURES: SPECIAL DOCUMENT PAPER, INK SCREENS, WATERMARK, BACKGROUND DESIGNS, HOLOGRAM, AND OTHER SECURITY FEATURES NOT LISTED AND DO EXCEED DOCUMENT SECURITY INDUSTRY GUIDELINES.

November 15, 2024
IGI Report No 657457922
ROUND BRILLIANT

7.30 - 7.34 X 4.58 MM	1.51 CARAT
Carat Weight	L
Color Grade	VS1
Clarity Grade	EXCELLENT
Cut Grade	62.5%
Depth	57%
Table	Medium Faceted
Grafe	
Culet	Poished
Polish	EXCELLENT
Symmetry	EXCELLENT
Fluorescence	NONE
Inscription(s)	see #45745792

Comments:
IDEAL CUT ROUND BRILLIANT

www.igi.org