



# INTERNATIONAL GEMOLOGICAL INSTITUTE

ELECTRONIC COPY



February 3, 2025

IGI Report Number 659445368

ROUND BRILLIANT

NATURAL DIAMOND

5.36 - 5.40 X 3.35 MM

Carat Weight 0.60 CARAT

Color Grade H

Clarity Grade VVS 2

Cut Grade EXCELLENT

Polish EXCELLENT

Symmetry EXCELLENT

Fluorescence NONE

Inscription(s) IGI 659445368

Comments: IDEAL CUT ROUND  
BRILLIANT

## DIAMOND REPORT

February 3, 2025

IGI Report Number

659445368

Description

NATURAL DIAMOND

Shape and Cutting Style

ROUND BRILLIANT

Measurements

5.36 - 5.40 X 3.35 MM

## GRADING RESULTS

Carat Weight

0.60 CARAT

Color Grade

H

Clarity Grade

VVS 2

Cut Grade

EXCELLENT

## ADDITIONAL GRADING INFORMATION

Polish

EXCELLENT

Symmetry

EXCELLENT

Fluorescence

NONE

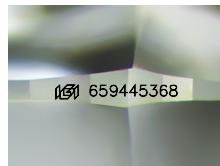
Identification Features

CLOUD

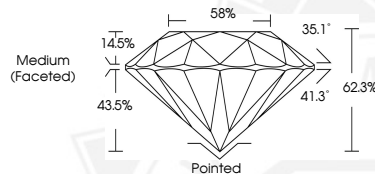
Inscription(s)

IGI 659445368

Comments: IDEAL CUT ROUND BRILLIANT



Sample Image Used



Medium  
(Faceted)

Pointed



February 3, 2025

IGI Report Number 659445368

ROUND BRILLIANT

NATURAL DIAMOND

5.36 - 5.40 X 3.35 MM

Carat Weight 0.60 CARAT

Color Grade H

Clarity Grade VVS 2

Cut Grade EXCELLENT

Polish EXCELLENT

Symmetry EXCELLENT

Fluorescence NONE

Inscription(s) IGI 659445368

Comments: IDEAL CUT ROUND  
BRILLIANT



THIS DOCUMENT WAS PRODUCED WITH THE FOLLOWING SECURITY MEASURES: SPECIAL DOCUMENT PAPER, INK SCREENS, WATERMARK, BACKGROUND DESIGNS, HOLOGRAM AND OTHER SECURITY FEATURES NOT LISTED AND DO EXCEED DOCUMENT SECURITY INDUSTRY GUIDELINES.

For terms & conditions and to verify this report, please visit [www.igi.org](http://www.igi.org)