



# INTERNATIONAL GEMOLOGICAL INSTITUTE

ELECTRONIC COPY

659446807



October 18, 2024

IGI Report Number 659446807

ROUND BRILLIANT

NATURAL DIAMOND

4.71 - 4.74 X 2.95 MM

Carat Weight 0.40 CARAT

Color Grade I

Clarity Grade SI 2

Cut Grade EXCELLENT

Polish EXCELLENT

Symmetry EXCELLENT

Fluorescence NONE

Inscription(s) IGI 659446807

Comments: IDEAL CUT ROUND

BRILLIANT

## DIAMOND REPORT

October 18, 2024

IGI Report Number

659446807

Description

NATURAL DIAMOND

Shape and Cutting Style

ROUND BRILLIANT

Measurements

4.71 - 4.74 X 2.95 MM

## GRADING RESULTS

Carat Weight 0.40 CARAT

Color Grade I

Clarity Grade SI 2

Cut Grade EXCELLENT

## ADDITIONAL GRADING INFORMATION

Polish EXCELLENT

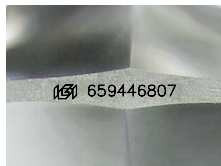
Symmetry EXCELLENT

Fluorescence NONE

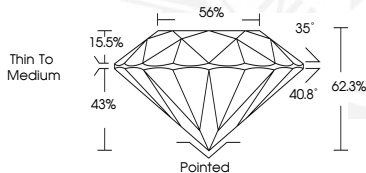
Identification Features FEATHER, CLOUD

Inscription(s) IGI 659446807

Comments: IDEAL CUT ROUND BRILLIANT



Sample Image Used



October 18, 2024

IGI Report Number 659446807

ROUND BRILLIANT

NATURAL DIAMOND

4.71 - 4.74 X 2.95 MM

Carat Weight 0.40 CARAT

Color Grade I

Clarity Grade SI 2

Cut Grade EXCELLENT

Polish EXCELLENT

Symmetry EXCELLENT

Fluorescence NONE

Inscription(s) IGI 659446807

Comments: IDEAL CUT ROUND

BRILLIANT



THIS DOCUMENT WAS PRODUCED WITH THE FOLLOWING SECURITY MEASURES: SPECIAL DOCUMENT PAPER, INK SCREENS, WATERMARK, BACKGROUND DESIGNS, HOLOGRAM AND OTHER SECURITY FEATURES NOT LISTED AND DO EXCEED DOCUMENT SECURITY INDUSTRY GUIDELINES.

For terms & conditions and to verify this report, please visit [www.igi.org](http://www.igi.org)