



**ELECTRONIC COPY**

## DIAMOND REPORT

November 15, 2024	
IGI Report Number	660411238
Description	NATURAL DIAMOND
Shape and Cutting Style	CUT CORNERED RECTANGULAR MODIFIED BRILLIANT
Measurements	7.31 X 5.79 X 3.96 MM

## GRADING RESULTS

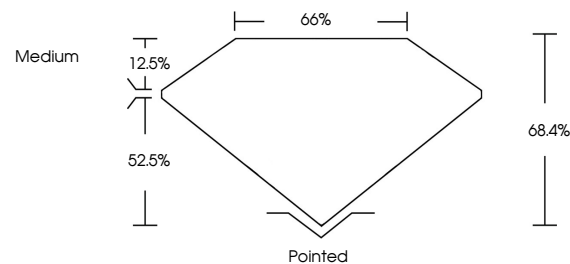
Carat Weight	1.50 CARAT
Color Grade	J
Clarity Grade	VS 1
Cut Grade	VERY GOOD

### ADDITIONAL GRADING INFORMATION

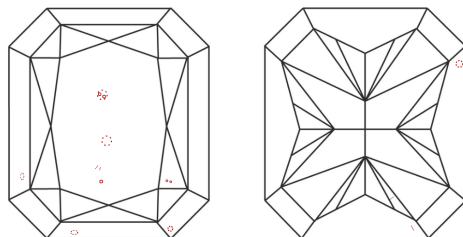
Polish	EXCELLENT
Symmetry	EXCELLENT
Fluorescence	NONE
Inscription(s)	 660411238

660411238  
Report verification at [igi.org](https://igi.org)

## PROPORTIONS

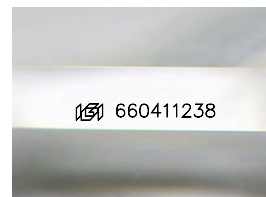


## CLARITY CHARACTERISTICS



## KEY TO SYMBOLS

Red symbols indicate internal characteristics.  
Green symbols indicate external characteristics.



Sample Image Used

## COLOR

D - F	G - J	K - M	N - R	S - Z	FANCY
Colorless	Near Colorless	Slightly Tinted	Very Light Color	Light Color	

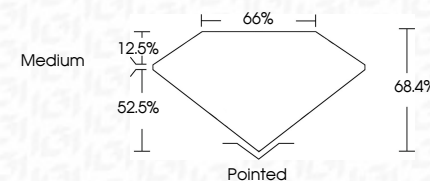
## CLARITY

IF	VVS <sup>1-2</sup>	VS <sup>1-2</sup>	SI <sup>1-2</sup>	I <sup>1-3</sup>
Internally Flawless	Very Very Slightly Included	Very Slightly Included	Slightly Included	Included

## DIAMOND REPORT



November 15, 2024	
IGI Report Number	660411238
Description	NATURAL DIAMOND
Shape and Cutting Style	CUT CORNERED RECTANGULAR MODIFIED BRILLIANT
Measurements	7.31 X 5.79 X 3.96 MM
GRADING RESULTS	
Carat Weight	1.50 CARAT
Color Grade	J
Clarity Grade	VS 1
Cut Grade	VERY GOOD



### ADDITIONAL GRADING INFORMATION

Polish	EXCELLENT
Symmetry	EXCELLENT
Fluorescence	NONE
Inscription(s)	1660411238



IG



© IGI 2020, International Gemological Institute

FD - 10 20

**www.igi.org**



THIS DOCUMENT WAS PRODUCED WITH THE FOLLOWING SECURITY MEASURES: SPECIAL DOCUMENT PAPER, INK SCREENS, WATERMARK, BACKGROUND DESIGNS, HOLOGRAM AND OTHER SECURITY FEATURES NOT LISTED AND DO EXCEED DOCUMENT SECURITY INDUSTRY GUIDELINE

November 15, 2024  
GI Report No 660411238

GI Report No 660411238  
CUT CORNERED RECT. MODIFIED BRILLANT

7.31 X 5.79 X 3.96 MM

7.31 X 6.79 X 3.96 MM	1.50 CARAT
-----------------------	------------

Color Grade J

Clarity Grade	VS 1
Cut Grade	VERY GOOD

Cut Grade	VERY GOOD
Depth	68.4%

Dep III	66.4%
Table	66%

	Girdle	Medium
1	10	10
2	10	10
3	10	10
4	10	10
5	10	10
6	10	10
7	10	10
8	10	10
9	10	10
10	10	10
11	10	10
12	10	10
13	10	10
14	10	10
15	10	10
16	10	10
17	10	10
18	10	10
19	10	10
20	10	10
21	10	10
22	10	10
23	10	10
24	10	10
25	10	10
26	10	10
27	10	10
28	10	10
29	10	10
30	10	10
31	10	10
32	10	10
33	10	10
34	10	10
35	10	10
36	10	10
37	10	10
38	10	10
39	10	10
40	10	10
41	10	10
42	10	10
43	10	10
44	10	10
45	10	10
46	10	10
47	10	10
48	10	10
49	10	10
50	10	10
51	10	10
52	10	10
53	10	10
54	10	10
55	10	10
56	10	10
57	10	10
58	10	10
59	10	10
60	10	10
61	10	10
62	10	10
63	10	10
64	10	10
65	10	10
66	10	10
67	10	10
68	10	10
69	10	10
70	10	10
71	10	10
72	10	10
73	10	10
74	10	10
75	10	10
76	10	10
77	10	10
78	10	10
79	10	10
80	10	10
81	10	10
82	10	10
83	10	10
84	10	10
85	10	10
86	10	10
87	10	10
88	10	10
89	10	10
90	10	10
91	10	10
92	10	10
93	10	10
94	10	10
95	10	10
96	10	10
97	10	10
98	10	10
99	10	10
100	10	10

	Culet	Pointed
1		
2		
3		
4		
5		
6		
7		
8		
9		
10		
11		
12		
13		
14		
15		
16		
17		
18		
19		
20		
21		
22		
23		
24		
25		
26		
27		
28		
29		
30		
31		
32		
33		
34		
35		
36		
37		
38		
39		
40		
41		
42		
43		
44		
45		
46		
47		
48		
49		
50		
51		
52		
53		
54		
55		
56		
57		
58		
59		
60		
61		
62		
63		
64		
65		
66		
67		
68		
69		
70		
71		
72		
73		
74		
75		
76		
77		
78		
79		
80		
81		
82		
83		
84		
85		
86		
87		
88		
89		
90		
91		
92		
93		
94		
95		
96		
97		
98		
99		
100		

Painted	EXCELLENT
Quiet	
Polish	

Symmetry	EXCELLENT
Ellipticity	NONE

Fluorescence	NONE
Inscription(s)	(157) 660411238