



# INTERNATIONAL GEMOLOGICAL INSTITUTE

ELECTRONIC COPY

## DIAMOND REPORT

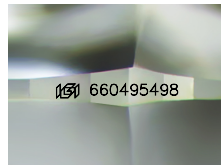
December 4, 2024  
IGI Report Number **660495498**  
Description **NATURAL DIAMOND**  
Shape and Cutting Style **ROUND BRILLIANT**  
Measurements **5.62 - 5.66 X 3.56 MM**

## GRADING RESULTS

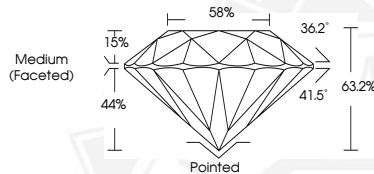
Carat Weight **0.70 CARAT**  
Color Grade **K**  
Clarity Grade **VS 2**  
Cut Grade **EXCELLENT**

## ADDITIONAL GRADING INFORMATION

Polish **EXCELLENT**  
Symmetry **EXCELLENT**  
Fluorescence **NONE**  
Identification Features **FEATHER, CRYSTAL CLOUD**  
Inscription(s) **(IGI) 660495498**



Sample Image Used



December 4, 2024  
IGI Report Number **660495498**  
**ROUND BRILLIANT**  
**NATURAL DIAMOND**  
**5.62 - 5.66 X 3.56 MM**  
Carat Weight **0.70 CARAT**  
Color Grade **K**  
Clarity Grade **VS 2**  
Cut Grade **EXCELLENT**  
Polish **EXCELLENT**  
Symmetry **EXCELLENT**  
Fluorescence **NONE**  
Inscription(s) **(IGI) 660495498**



December 4, 2024  
IGI Report Number **660495498**  
**ROUND BRILLIANT**  
**NATURAL DIAMOND**  
**5.62 - 5.66 X 3.56 MM**  
Carat Weight **0.70 CARAT**  
Color Grade **K**  
Clarity Grade **VS 2**  
Cut Grade **EXCELLENT**  
Polish **EXCELLENT**  
Symmetry **EXCELLENT**  
Fluorescence **NONE**  
Inscription(s) **(IGI) 660495498**



THIS DOCUMENT WAS PRODUCED WITH THE FOLLOWING SECURITY MEASURES: SPECIAL DOCUMENT PAPER, INK SCREENS, WATERMARK, BACKGROUND DESIGN, HOLOGRAM AND OTHER SECURITY FEATURES NOT LISTED AND DO EXCEED DOCUMENT SECURITY INDUSTRY GUIDELINES.

For terms & conditions and to verify this report, please visit [www.igi.org](http://www.igi.org)