



# INTERNATIONAL GEMOLOGICAL INSTITUTE

ELECTRONIC COPY

660497145

## DIAMOND REPORT

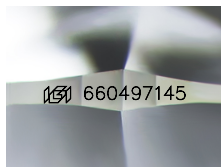
January 3, 2025  
IGI Report Number **660497145**  
Description **NATURAL DIAMOND**  
Shape and Cutting Style **ROUND BRILLIANT**  
Measurements **5.99 - 6.03 X 3.74 MM**

## GRADING RESULTS

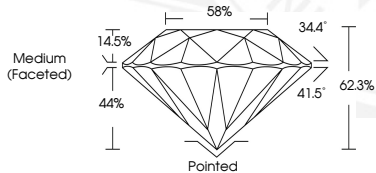
Carat Weight **0.83 CARAT**  
Color Grade **K**  
Clarity Grade **VS 2**  
Cut Grade **EXCELLENT**

## ADDITIONAL GRADING INFORMATION

Polish **EXCELLENT**  
Symmetry **EXCELLENT**  
Fluorescence **NONE**  
Identification Features **CRYSTAL, FEATHER**  
Inscription(s) **IGI 660497145**



Sample Image Used



January 3, 2025  
IGI Report Number **660497145**  
ROUND BRILLIANT  
NATURAL DIAMOND  
5.99 - 6.03 X 3.74 MM  
Carat Weight **0.83 CARAT**  
Color Grade **K**  
Clarity Grade **VS 2**  
Cut Grade **EXCELLENT**  
Polish **EXCELLENT**  
Symmetry **EXCELLENT**  
Fluorescence **NONE**  
Inscription(s) **IGI 660497145**



January 3, 2025  
IGI Report Number **660497145**  
ROUND BRILLIANT  
NATURAL DIAMOND  
5.99 - 6.03 X 3.74 MM  
Carat Weight **0.83 CARAT**  
Color Grade **K**  
Clarity Grade **VS 2**  
Cut Grade **EXCELLENT**  
Polish **EXCELLENT**  
Symmetry **EXCELLENT**  
Fluorescence **NONE**  
Inscription(s) **IGI 660497145**



THIS DOCUMENT WAS PRODUCED WITH THE FOLLOWING SECURITY MEASURES: SPECIAL DOCUMENT PAPER, INK SCREENS, WATERMARK, BACKGROUND DESIGNS, HOLOGRAM AND OTHER SECURITY FEATURES NOT LISTED AND DO EXCEED DOCUMENT SECURITY INDUSTRY GUIDELINES.

For terms & conditions and to verify this report, please visit [www.igi.org](http://www.igi.org)