



# INTERNATIONAL GEMOLOGICAL INSTITUTE

## DIAMOND REPORT

December 26, 2024

IGI Report Number

662448091

Description

NATURAL DIAMOND

Shape and Cutting Style

ROUND BRILLIANT

Measurements

5.41 - 5.43 X 3.31 MM

## GRADING RESULTS

Carat Weight

0.60 CARAT

Color Grade

E

Clarity Grade

I1

Cut Grade

EXCELLENT

## ADDITIONAL GRADING INFORMATION

Polish

EXCELLENT

Symmetry

EXCELLENT

Fluorescence

VERY SLIGHT

Identification Features

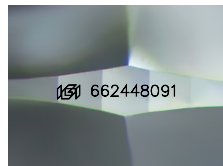
CLOUD, CRYSTAL

Inscription(s)

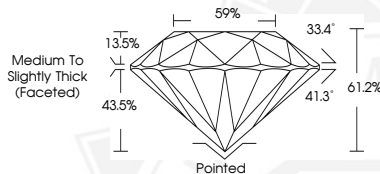
IGI 662448091

Comments: IDEAL CUT ROUND BRILLIANT

ELECTRONIC COPY



Sample Image Used



December 26, 2024

IGI Report Number 662448091

ROUND BRILLIANT

NATURAL DIAMOND

5.41 - 5.43 X 3.31 MM

Carat Weight 0.60 CARAT

Color Grade E

Clarity Grade I1

Cut Grade EXCELLENT

Polish EXCELLENT

Symmetry EXCELLENT

Fluorescence VERY SLIGHT

Inscription(s) IGI 662448091

Comments: IDEAL CUT ROUND

BRILLIANT



December 26, 2024

IGI Report Number 662448091

ROUND BRILLIANT

NATURAL DIAMOND

5.41 - 5.43 X 3.31 MM

Carat Weight 0.60 CARAT

Color Grade E

Clarity Grade I1

Cut Grade EXCELLENT

Polish EXCELLENT

Symmetry EXCELLENT

Fluorescence VERY SLIGHT

Inscription(s) IGI 662448091

Comments: IDEAL CUT ROUND

BRILLIANT



THIS DOCUMENT WAS PRODUCED WITH THE FOLLOWING SECURITY MEASURES: SPECIAL DOCUMENT PAPER, INK SCREENS, WATERMARK, BACKGROUND DESIGNS, HOLOGRAM AND OTHER SECURITY FEATURES NOT LISTED AND DO EXCEED DOCUMENT SECURITY INDUSTRY GUIDELINES.

For terms & conditions and to verify this report, please visit [www.igi.org](http://www.igi.org)