



**ELECTRONIC COPY**

## DIAMOND REPORT

March 18, 2025	
IGI Report Number	665416793
Description	NATURAL DIAMOND
Shape and Cutting Style	ROUND BRILLIANT
Measurements	7.23 - 7.30 X 4.59 MM

## GRADING RESULTS

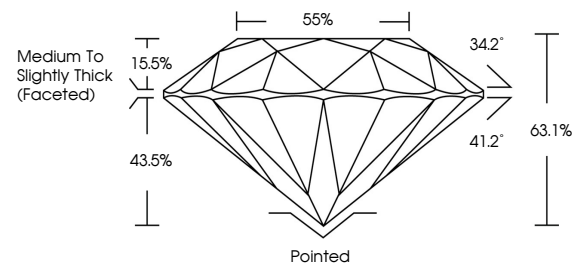
Carat Weight	1.50 CARAT
Color Grade	H
Clarity Grade	SI 2
Cut Grade	EXCELLENT

### ADDITIONAL GRADING INFORMATION

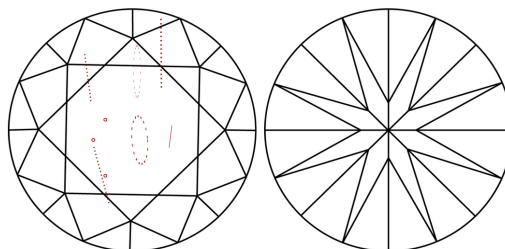
Polish	EXCELLENT
Symmetry	VERY GOOD
Fluorescence	NONE
Inscription(s)	151 665416793

665416793  
Report verification at [igi.org](http://igi.org)

## PROPORTIONS

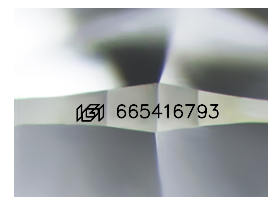


## CLARITY CHARACTERISTICS



## KEY TO SYMBOLS

Red symbols indicate internal characteristics.  
Green symbols indicate external characteristics.



Sample Image Used

**COLOR**

D - F	G - J	K - M	N - R	S - Z	FANCY
Colorless	Near Colorless	Slightly Tinted	Very Light Color	Light Color	

## CLARITY

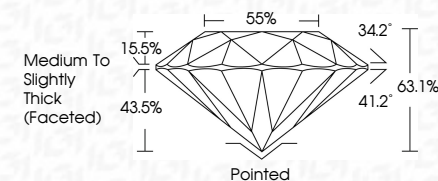
IF	VVS <sup>1-2</sup>	VS <sup>1-2</sup>	SI <sup>1-2</sup>	I <sup>1-3</sup>
Internally Flawless	Very Very Slightly Included	Very Slightly Included	Slightly Included	Included



March 18, 2025	
IGI Report Number	665416793
Description	NATURAL DIAMOND
Shape and Cutting Style	ROUND BRILLIANT
Measurements	7.23 - 7.30 X 4.59 MM

## GRADING RESULTS

Carat Weight	1.50 CARAT
Color Grade	H
Clarity Grade	S1 2
Cut Grade	EXCELLENT



### ADDITIONAL GRADING INFORMATION

Polish	EXCELLENT
Symmetry	VERY GOOD
Fluorescence	NONE
Inscription(s)	(15) 665416793



IG



© IGI 2020, International Gemological Institute

FD - 10 20



THIS DOCUMENT WAS PRODUCED WITH THE FOLLOWING SECURITY MEASURES: SPECIAL DOCUMENT PAPER, INK SCREENS, WATERMARK, BACKGROUND DESIGNS, HOLOGRAM, AND OTHER SECURITY FEATURES NOT LISTED AND DO EXCEED DOCUMENT SECURITY INDUSTRY GUIDELINES.

**www.igi.org**

March 18, 2025  
 CGI Report No 665416793  
 BOUND BRILLIANT

1.25 - 1.30 X 4.59 MM	Clarity Grade	\$12	1.50 CARAT
	Cut Grade	EXCELLENT	H
	Depth	63.1%	
	Table	55%	
	Girdle	Medium to Slightly Thick (Fastened)	
	Culet	Pointed	
	Polish	EXCELLENT	
	Symmetry	VERY GOOD	
	Fluorescence	NONE	
	Measurements (in mm)	near 6.65x4.75x3	