



# INTERNATIONAL GEMOLOGICAL INSTITUTE

ELECTRONIC COPY

## DIAMOND REPORT

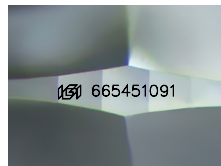
January 6, 2025  
IGI Report Number **665451091**  
Description **NATURAL DIAMOND**  
Shape and Cutting Style **ROUND BRILLIANT**  
Measurements **5.65 - 5.70 X 3.59 MM**

## GRADING RESULTS

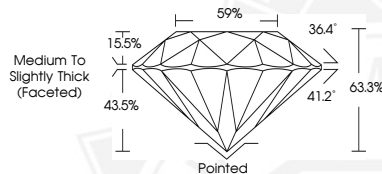
Carat Weight **0.73 CARAT**  
Color Grade **L**  
Clarity Grade **VVS 2**  
Cut Grade **EXCELLENT**

## ADDITIONAL GRADING INFORMATION

Polish **EXCELLENT**  
Symmetry **EXCELLENT**  
Fluorescence **VERY SLIGHT**  
Identification Features **CLOUD**  
Inscription(s) **(IGI) 665451091**



Sample Image Used



January 6, 2025  
IGI Report Number **665451091**  
**ROUND BRILLIANT**  
**NATURAL DIAMOND**  
**5.65 - 5.70 X 3.59 MM**  
Carat Weight **0.73 CARAT**  
Color Grade **L**  
Clarity Grade **VVS 2**  
Cut Grade **EXCELLENT**  
Polish **EXCELLENT**  
Symmetry **EXCELLENT**  
Fluorescence **VERY SLIGHT**  
Inscription(s) **(IGI) 665451091**



January 6, 2025  
IGI Report Number **665451091**  
**ROUND BRILLIANT**  
**NATURAL DIAMOND**  
**5.65 - 5.70 X 3.59 MM**  
Carat Weight **0.73 CARAT**  
Color Grade **L**  
Clarity Grade **VVS 2**  
Cut Grade **EXCELLENT**  
Polish **EXCELLENT**  
Symmetry **EXCELLENT**  
Fluorescence **VERY SLIGHT**  
Inscription(s) **(IGI) 665451091**



THIS DOCUMENT WAS PRODUCED WITH THE FOLLOWING SECURITY MEASURES: SPECIAL DOCUMENT PAPER, INK SCREENS, WATERMARK, BACKGROUND DESIGNS, HOLOGRAM AND OTHER SECURITY FEATURES NOT LISTED AND DO EXCEED DOCUMENT SECURITY INDUSTRY GUIDELINES.

For terms & conditions and to verify this report, please visit [www.igi.org](http://www.igi.org)