



# INTERNATIONAL GEMOLOGICAL INSTITUTE

## DIAMOND REPORT

November 25, 2024

IGI Report Number

666405251

Description

NATURAL DIAMOND

Shape and Cutting Style

ROUND BRILLIANT

Measurements

5.69 - 5.73 X 3.54 MM

## GRADING RESULTS

Carat Weight

0.71 CARAT

Color Grade

I

Clarity Grade

VVS 2

Cut Grade

EXCELLENT

## ADDITIONAL GRADING INFORMATION

Polish

EXCELLENT

Symmetry

EXCELLENT

Fluorescence

VERY SLIGHT

Identification Features

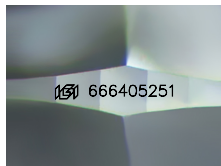
PINPOINT, CLOUD, FEATHER

Inscription(s)

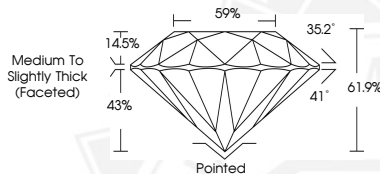
IGI 666405251

Comments: IDEAL CUT ROUND BRILLIANT

ELECTRONIC COPY



Sample Image Used



November 25, 2024

IGI Report Number 666405251

ROUND BRILLIANT

NATURAL DIAMOND

5.69 - 5.73 X 3.54 MM

Carat Weight 0.71 CARAT

Color Grade I

Clarity Grade VVS 2

Cut Grade EXCELLENT

Polish EXCELLENT

Symmetry EXCELLENT

Fluorescence VERY SLIGHT

Inscription(s) IGI 666405251

Comments: IDEAL CUT ROUND

BRILLIANT



November 25, 2024

IGI Report Number 666405251

ROUND BRILLIANT

NATURAL DIAMOND

5.69 - 5.73 X 3.54 MM

Carat Weight 0.71 CARAT

Color Grade I

Clarity Grade VVS 2

Cut Grade EXCELLENT

Polish EXCELLENT

Symmetry EXCELLENT

Fluorescence VERY SLIGHT

Inscription(s) IGI 666405251

Comments: IDEAL CUT ROUND

BRILLIANT



THIS DOCUMENT WAS PRODUCED WITH THE FOLLOWING SECURITY MEASURES: SPECIAL DOCUMENT PAPER, INK SCREENS, WATERMARK, BACKGROUND DESIGNS, HOLOGRAM AND OTHER SECURITY FEATURES NOT LISTED AND DO EXCEED DOCUMENT SECURITY INDUSTRY GUIDELINES.

For terms & conditions and to verify this report, please visit [www.igi.org](http://www.igi.org)