



# INTERNATIONAL GEMOLOGICAL INSTITUTE

## DIAMOND REPORT

January 31, 2025

IGI Report Number

667403838

Description

NATURAL DIAMOND

Shape and Cutting Style

ROUND BRILLIANT

Measurements

3.61 - 3.65 X 2.24 MM

### GRADING RESULTS

Carat Weight

0.18 CARAT

Color Grade

D

Clarity Grade

SI 1

Cut Grade

EXCELLENT

### ADDITIONAL GRADING INFORMATION

Polish

EXCELLENT

Symmetry

EXCELLENT

Fluorescence

NONE

Identification Features

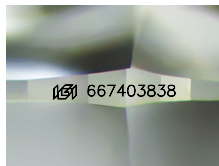
CRYSTAL CLOUD

Inscription(s)

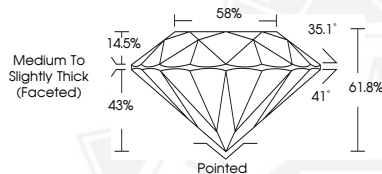
IGI 667403838

Comments: IDEAL CUT ROUND BRILLIANT

ELECTRONIC COPY



Sample Image Used



January 31, 2025

IGI Report Number 667403838

ROUND BRILLIANT

NATURAL DIAMOND

3.61 - 3.65 X 2.24 MM

Carat Weight 0.18 CARAT

Color Grade D

Clarity Grade SI 1

Cut Grade EXCELLENT

Polish EXCELLENT

Symmetry EXCELLENT

Fluorescence NONE

Inscription(s) IGI 667403838

Comments: IDEAL CUT ROUND

BRILLIANT



January 31, 2025

IGI Report Number 667403838

ROUND BRILLIANT

NATURAL DIAMOND

3.61 - 3.65 X 2.24 MM

Carat Weight 0.18 CARAT

Color Grade D

Clarity Grade SI 1

Cut Grade EXCELLENT

Polish EXCELLENT

Symmetry EXCELLENT

Fluorescence NONE

Inscription(s) IGI 667403838

Comments: IDEAL CUT ROUND

BRILLIANT



THIS DOCUMENT WAS PRODUCED WITH THE FOLLOWING SECURITY MEASURES: SPECIAL DOCUMENT PAPER, INK SCREENS, WATERMARK, BACKGROUND DESIGNS, HOLOGRAM AND OTHER SECURITY FEATURES NOT LISTED AND DO EXCEED DOCUMENT SECURITY INDUSTRY GUIDELINES.

For terms & conditions and to verify this report, please visit [www.igi.org](http://www.igi.org)