



ELECTRONIC COPY

DIAMOND REPORT

| | |
|-------------------------|-----------------------|
| December 10, 2024 | |
| IGI Report Number | 668417288 |
| Description | NATURAL DIAMOND |
| Shape and Cutting Style | ROUND BRILLIANT |
| Measurements | 9.46 - 9.52 X 5.54 MM |

GRADING RESULTS

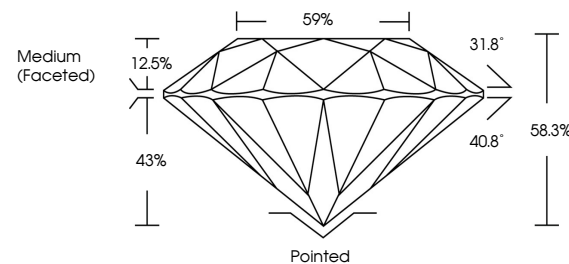
| | |
|---------------|-------------|
| Carat Weight | 3.01 CARATS |
| Color Grade | J |
| Clarity Grade | VVS 1 |
| Cut Grade | EXCELLENT |

ADDITIONAL GRADING INFORMATION

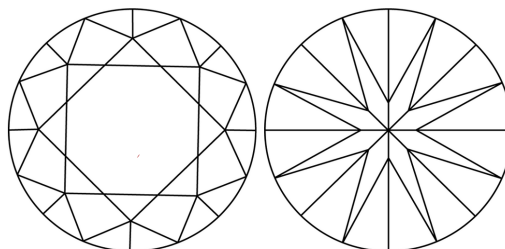
| | |
|----------------|---|
| Polish | EXCELLENT |
| Symmetry | EXCELLENT |
| Fluorescence | NONE |
| Inscription(s) |  668417288 |

668417288
Report verification at igi.org

PROPORTIONS



CLARITY CHARACTERISTICS



KEY TO SYMBOLS

Red symbols indicate internal characteristics.
Green symbols indicate external characteristics.



Sample Image Used

COLOR

| D - F | G - J | K - M | N - R | S - Z | FANCY |
|-----------|----------------|-----------------|------------------|-------------|-------|
| Colorless | Near Colorless | Slightly Tinted | Very Light Color | Light Color | |

CLARITY

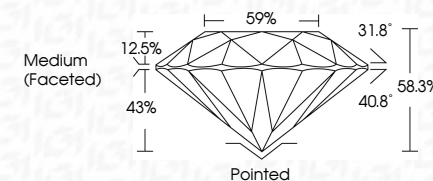
| IF | VVS ¹⁻² | VS ¹⁻² | SI ¹⁻² | I ¹⁻³ |
|---------------------|-----------------------------|------------------------|-------------------|------------------|
| Internally Flawless | Very Very Slightly Included | Very Slightly Included | Slightly Included | Included |



| | |
|-------------------------|-----------------------|
| December 10, 2024 | |
| IGI Report Number | 668417288 |
| Description | NATURAL DIAMOND |
| Shape and Cutting Style | ROUND BRILLIANT |
| Measurements | 9.46 - 9.52 X 5.54 MM |

GRADING RESULTS

| | |
|---------------|-------------|
| Carat Weight | 3.01 CARATS |
| Color Grade | J |
| Clarity Grade | VVS 1 |
| Cut Grade | EXCELLENT |



ADDITIONAL GRADING INFORMATION

| | |
|----------------|-----------|
| Polish | EXCELLENT |
| Symmetry | EXCELLENT |
| Fluorescence | NONE |
| Inscription(s) | 168417288 |



IG



© IGI 2020, International Gemological Institute

FD - 10 20

www.igi.org



THIS DOCUMENT WAS PRODUCED WITH THE FOLLOWING SECURITY MEASURES: SPECIAL DOCUMENT PAPER, INK SCREENS, WATERMARK, BACKGROUND DESIGNS, HOLOGRAM AND OTHER SECURITY FEATURES NOT LISTED AND DO EXCEED DOCUMENT SECURITY INDUSTRY GUIDELINE

December 10, 2024
IGI Report No 668417288
ROUND BRILLIANT

| | | |
|-----------------------|---------------|------------------|
| 9.46 - 9.52 X 5.54 MM | Carat Weight | 3.01 CARATS |
| | Color Grade | J |
| | Clarity Grade | VS1 |
| | Cut Grade | EXCELLENT |
| | Depth | 68.9% |
| | Table | 59% |
| | Girdle | Medium (Faceted) |
| | Culet | Pointed |
| | Polish | EXCELLENT |
| | Symmetry | EXCELLENT |
| | Fluorescence | NONE |