



## DIAMOND REPORT

January 15, 2025	
IGI Report Number	669461616
Description	NATURAL DIAMOND
Shape and Cutting Style	ROUND BRILLIANT
Measurements	11.16 - 11.27 X 6.57 MM

## GRADING RESULTS

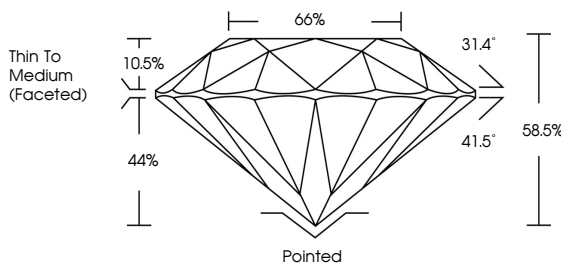
Carat Weight	5.02 CARATS
Color Grade	G
Clarity Grade	VVS 2
Cut Grade	VERY GOOD

### ADDITIONAL GRADING INFORMATION

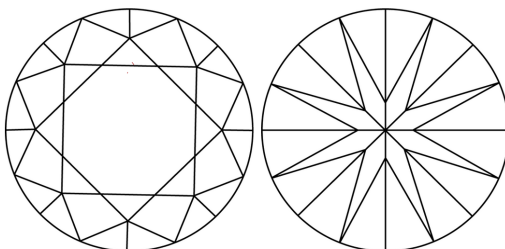
Polish	EXCELLENT
Symmetry	VERY GOOD
Fluorescence	NONE
Inscription(s)	151 669461616

669461616  
Report verification at [igi.org](https://igi.org)

## PROPORTIONS

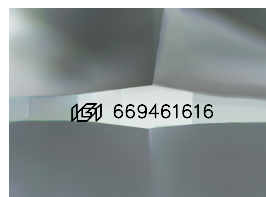


## CLARITY CHARACTERISTICS



## KEY TO SYMBOLS

Red symbols indicate internal characteristics.  
Green symbols indicate external characteristics.



Sample Image Used

## COLOR

D - F	G - J	K - M	N - R	S - Z	FANCY
Colorless	Near Colorless	Slightly Tinted	Very Light Color	Light Color	

## CLARITY

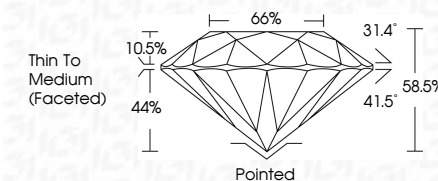
IF	VVS <sup>1-2</sup>	VS <sup>1-2</sup>	SI <sup>1-2</sup>	I <sup>1-3</sup>
Internally Flawless	Very Very Slightly Included	Very Slightly Included	Slightly Included	Included



January 15, 2025	
IGI Report Number	669461616
Description	NATURAL DIAMOND
Shape and Cutting Style	ROUND BRILLIANT
Measurements	11.16 - 11.27 X 6.57 MM

## GRADING RESULTS

Carat Weight	5.02 CARATS
Color Grade	G
Clarity Grade	VVS 2
Cut Grade	VERY GOOD



### ADDITIONAL GRADING INFORMATION

Polish	EXCELLENT
Symmetry	VERY GOOD
Fluorescence	NONE
Inscription(s)	(15) 669461616



© IGI 2020, International Gemological Institute

FD - 10 20

**www.igi.org**



THIS DOCUMENT WAS PRODUCED WITH THE FOLLOWING SECURITY MEASURES: SPECIAL DOCUMENT PAPER, INK SCREENS, WATERMARK, BACKGROUND DESIGNS, HOLOGRAM AND OTHER SECURITY FEATURES NOT LISTED AND DO EXCEED DOCUMENT SECURITY INDUSTRY GUIDELINE

January 15, 2025  
GI Report No 669461616  
POIND BRILLIANT

11.16 - 11.27 X 6.57 MM	Carat Weight	5.02 CARATS
	Color Grade	G
	Clarity Grade	VVS 2
	Cut Grade	VERY GOOD
	Depth	88.9%
	Table	66%
	Girdle	Thin To Medium (faced)
	Culet	Pointed
	Polish	EXCELLENT
	Symmetry	VERY GOOD
	Fluorescence	NONE