



# INTERNATIONAL GEMOLOGICAL INSTITUTE

## DIAMOND REPORT

January 2, 2025  
IGI Report Number **670414211**  
Description **NATURAL DIAMOND**  
Shape and Cutting Style **ROUND BRILLIANT**  
Measurements **4.70 - 4.73 X 2.98 MM**

## GRADING RESULTS

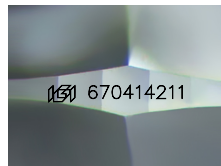
Carat Weight **0.41 CARAT**  
Color Grade **H**  
Clarity Grade **SI 1**  
Cut Grade **EXCELLENT**

## ADDITIONAL GRADING INFORMATION

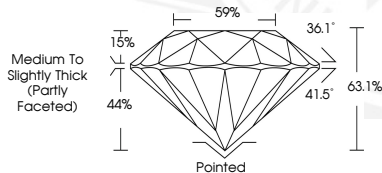
Polish **EXCELLENT**  
Symmetry **EXCELLENT**  
Fluorescence **NONE**  
Identification Features **FEATHER**  
Inscription(s) **(G) 670414211**

ELECTRONIC COPY

670414211



Sample Image Used



January 2, 2025  
IGI Report Number **670414211**  
ROUND BRILLIANT  
NATURAL DIAMOND  
4.70 - 4.73 X 2.98 MM  
Carat Weight **0.41 CARAT**  
Color Grade **H**  
Clarity Grade **SI 1**  
Cut Grade **EXCELLENT**  
Polish **EXCELLENT**  
Symmetry **EXCELLENT**  
Fluorescence **NONE**  
Inscription(s) **(G) 670414211**



January 2, 2025  
IGI Report Number **670414211**  
ROUND BRILLIANT  
NATURAL DIAMOND  
4.70 - 4.73 X 2.98 MM  
Carat Weight **0.41 CARAT**  
Color Grade **H**  
Clarity Grade **SI 1**  
Cut Grade **EXCELLENT**  
Polish **EXCELLENT**  
Symmetry **EXCELLENT**  
Fluorescence **NONE**  
Inscription(s) **(G) 670414211**



THIS DOCUMENT WAS PRODUCED WITH THE FOLLOWING SECURITY MEASURES: SPECIAL DOCUMENT PAPER, INK SCREENS, WATERMARK, BACKGROUND DESIGNS, HOLOGRAM AND OTHER SECURITY FEATURES NOT LISTED AND DO EXCEED DOCUMENT SECURITY INDUSTRY GUIDELINES.

For terms & conditions and to verify this report, please visit [www.igi.org](http://www.igi.org)