



INTERNATIONAL GEMOLOGICAL INSTITUTE

DIAMOND REPORT

January 17, 2025
IGI Report Number **670414241**
Description **NATURAL DIAMOND**
Shape and Cutting Style **ROUND BRILLIANT**
Measurements **4.77 - 4.79 X 2.89 MM**

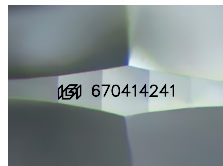
GRADING RESULTS

Carat Weight **0.40 CARAT**
Color Grade **G**
Clarity Grade **SI 1**
Cut Grade **EXCELLENT**

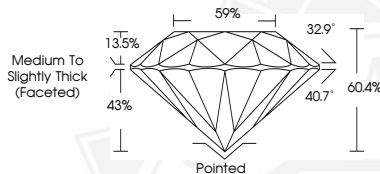
ADDITIONAL GRADING INFORMATION

Polish **EXCELLENT**
Symmetry **EXCELLENT**
Fluorescence **NONE**
Identification Features **CLOUD, CRYSTAL, FEATHER**
Inscription(s) **IGI 670414241**
Comments: IDEAL CUT ROUND BRILLIANT

ELECTRONIC COPY



Sample Image Used



January 17, 2025
IGI Report Number **670414241**
ROUND BRILLIANT
NATURAL DIAMOND
4.77 - 4.79 X 2.89 MM
Carat Weight **0.40 CARAT**
Color Grade **G**
Clarity Grade **SI 1**
Cut Grade **EXCELLENT**
Polish **EXCELLENT**
Symmetry **EXCELLENT**
Fluorescence **NONE**
Inscription(s) **IGI 670414241**
Comments: IDEAL CUT ROUND BRILLIANT



January 17, 2025
IGI Report Number **670414241**
ROUND BRILLIANT
NATURAL DIAMOND
4.77 - 4.79 X 2.89 MM
Carat Weight **0.40 CARAT**
Color Grade **G**
Clarity Grade **SI 1**
Cut Grade **EXCELLENT**
Polish **EXCELLENT**
Symmetry **EXCELLENT**
Fluorescence **NONE**
Inscription(s) **IGI 670414241**
Comments: IDEAL CUT ROUND BRILLIANT



THIS DOCUMENT WAS PRODUCED WITH THE FOLLOWING SECURITY MEASURES: SPECIAL DOCUMENT PAPER, INK SCREENS, WATERMARK, BACKGROUND DESIGNS, HOLOGRAM AND OTHER SECURITY FEATURES NOT LISTED AND DO EXCEED DOCUMENT SECURITY INDUSTRY GUIDELINES.

For terms & conditions and to verify this report, please visit www.igi.org