



# INTERNATIONAL GEMOLOGICAL INSTITUTE

ELECTRONIC COPY



January 6, 2025

IGI Report Number 670414761

ROUND BRILLIANT

NATURAL DIAMOND

4.29 - 4.32 X 2.65 MM

Carat Weight	0.31 CARAT
Color Grade	H
Clarity Grade	SI 1
Cut Grade	EXCELLENT
Polish	EXCELLENT
Symmetry	EXCELLENT
Fluorescence	NONE
Inscription(s)	IGI 670414761

## DIAMOND REPORT

January 6, 2025

IGI Report Number

670414761

Description

NATURAL DIAMOND

Shape and Cutting Style

ROUND BRILLIANT

Measurements

4.29 - 4.32 X 2.65 MM

## GRADING RESULTS

Carat Weight

0.31 CARAT

Color Grade

H

Clarity Grade

SI 1

Cut Grade

EXCELLENT

## ADDITIONAL GRADING INFORMATION

Polish

EXCELLENT

Symmetry

EXCELLENT

Fluorescence

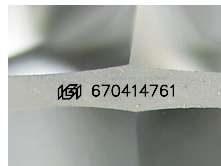
NONE

Identification Features

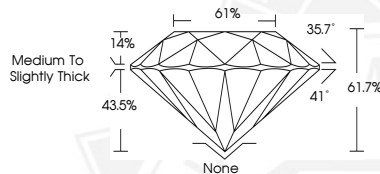
FEATHER, CLOUD

Inscription(s)

IGI 670414761



Sample Image Used



January 6, 2025

IGI Report Number 670414761

ROUND BRILLIANT

NATURAL DIAMOND

4.29 - 4.32 X 2.65 MM

Carat Weight	0.31 CARAT
Color Grade	H
Clarity Grade	SI 1
Cut Grade	EXCELLENT
Polish	EXCELLENT
Symmetry	EXCELLENT
Fluorescence	NONE
Inscription(s)	IGI 670414761



THIS DOCUMENT WAS PRODUCED WITH THE FOLLOWING SECURITY MEASURES: SPECIAL DOCUMENT PAPER, INK SCREENS, WATERMARK, BACKGROUND DESIGN, HOLOGRAM AND OTHER SECURITY FEATURES NOT LISTED AND DO EXCEED DOCUMENT SECURITY INDUSTRY GUIDELINES.

For terms & conditions and to verify this report, please visit [www.igi.org](http://www.igi.org)