



# INTERNATIONAL GEMOLOGICAL INSTITUTE

## DIAMOND REPORT

December 26, 2024

IGI Report Number

670416708

Description

NATURAL DIAMOND

Shape and Cutting Style

ROUND BRILLIANT

Measurements

5.25 - 5.27 X 3.28 MM

## GRADING RESULTS

Carat Weight

0.55 CARAT

Color Grade

H

Clarity Grade

SI 2

Cut Grade

EXCELLENT

## ADDITIONAL GRADING INFORMATION

Polish

EXCELLENT

Symmetry

EXCELLENT

Fluorescence

VERY SLIGHT

Identification Features

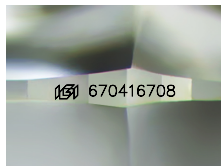
FEATHER, CRYSTAL

Inscription(s)

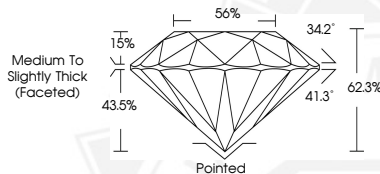
IGI 670416708

Comments: IDEAL CUT ROUND BRILLIANT

ELECTRONIC COPY



Sample Image Used



December 26, 2024

IGI Report Number 670416708

ROUND BRILLIANT

NATURAL DIAMOND

5.25 - 5.27 X 3.28 MM

Carat Weight 0.55 CARAT

Color Grade H

Clarity Grade SI 2

Cut Grade EXCELLENT

Polish EXCELLENT

Symmetry EXCELLENT

Fluorescence VERY SLIGHT

Inscription(s) IGI 670416708

Comments: IDEAL CUT ROUND

BRILLIANT



December 26, 2024

IGI Report Number 670416708

ROUND BRILLIANT

NATURAL DIAMOND

5.25 - 5.27 X 3.28 MM

Carat Weight 0.55 CARAT

Color Grade H

Clarity Grade SI 2

Cut Grade EXCELLENT

Polish EXCELLENT

Symmetry EXCELLENT

Fluorescence VERY SLIGHT

Inscription(s) IGI 670416708

Comments: IDEAL CUT ROUND

BRILLIANT



THIS DOCUMENT WAS PRODUCED WITH THE FOLLOWING SECURITY MEASURES: SPECIAL DOCUMENT PAPER, INK SCREENS, WATERMARK, BACKGROUND DESIGNS, HOLOGRAM AND OTHER SECURITY FEATURES NOT LISTED AND DO EXCEED DOCUMENT SECURITY INDUSTRY GUIDELINES.

For terms & conditions and to verify this report, please visit [www.igi.org](http://www.igi.org)