



# INTERNATIONAL GEMOLOGICAL INSTITUTE

## DIAMOND REPORT

January 21, 2025  
IGI Report Number **670417854**  
Description **NATURAL DIAMOND**  
Shape and Cutting Style **ROUND BRILLIANT**  
Measurements **5.62 - 5.65 X 3.51 MM**

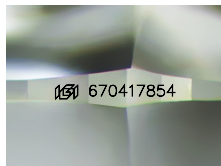
### GRADING RESULTS

Carat Weight **0.70 CARAT**  
Color Grade **I**  
Clarity Grade **SI 1**  
Cut Grade **EXCELLENT**

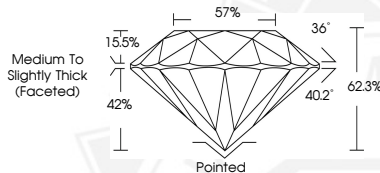
### ADDITIONAL GRADING INFORMATION

Polish **EXCELLENT**  
Symmetry **EXCELLENT**  
Fluorescence **VERY SLIGHT**  
Identification Features **CRYSTAL CLOUD**  
Inscription(s) **IGI 670417854**

ELECTRONIC COPY



Sample Image Used



January 21, 2025  
IGI Report Number **670417854**  
**ROUND BRILLIANT**  
**NATURAL DIAMOND**  
**5.62 - 5.65 X 3.51 MM**  
Carat Weight **0.70 CARAT**  
Color Grade **I**  
Clarity Grade **SI 1**  
Cut Grade **EXCELLENT**  
Polish **EXCELLENT**  
Symmetry **EXCELLENT**  
Fluorescence **VERY SLIGHT**  
Inscription(s) **IGI 670417854**



January 21, 2025  
IGI Report Number **670417854**  
**ROUND BRILLIANT**  
**NATURAL DIAMOND**  
**5.62 - 5.65 X 3.51 MM**  
Carat Weight **0.70 CARAT**  
Color Grade **I**  
Clarity Grade **SI 1**  
Cut Grade **EXCELLENT**  
Polish **EXCELLENT**  
Symmetry **EXCELLENT**  
Fluorescence **VERY SLIGHT**  
Inscription(s) **IGI 670417854**



THIS DOCUMENT WAS PRODUCED WITH THE FOLLOWING SECURITY MEASURES: SPECIAL DOCUMENT PAPER, INK SCREENS, WATERMARK, BACKGROUND DESIGN, HOLOGRAM AND OTHER SECURITY FEATURES NOT LISTED AND DO EXCEED DOCUMENT SECURITY INDUSTRY GUIDELINES.

For terms & conditions and to verify this report, please visit [www.igi.org](http://www.igi.org)