



# INTERNATIONAL GEMOLOGICAL INSTITUTE

ELECTRONIC COPY

## DIAMOND REPORT

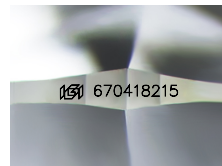
January 16, 2025  
IGI Report Number **670418215**  
Description **NATURAL DIAMOND**  
Shape and Cutting Style **ROUND BRILLIANT**  
Measurements **5.22 - 5.24 X 3.24 MM**

## GRADING RESULTS

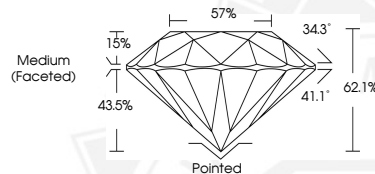
Carat Weight **0.54 CARAT**  
Color Grade **H**  
Clarity Grade **SI 1**  
Cut Grade **EXCELLENT**

## ADDITIONAL GRADING INFORMATION

Polish **EXCELLENT**  
Symmetry **EXCELLENT**  
Fluorescence **STRONG**  
Identification Features **FEATHER, CLOUD**  
Inscription(s) **IGI 670418215**  
Comments: IDEAL CUT ROUND BRILLIANT



Sample Image Used



January 16, 2025  
IGI Report Number **670418215**  
ROUND BRILLIANT  
NATURAL DIAMOND  
5.22 - 5.24 X 3.24 MM  
Carat Weight **0.54 CARAT**  
Color Grade **H**  
Clarity Grade **SI 1**  
Cut Grade **EXCELLENT**  
Polish **EXCELLENT**  
Symmetry **EXCELLENT**  
Fluorescence **STRONG**  
Inscription(s) **IGI 670418215**  
Comments: IDEAL CUT ROUND BRILLIANT



January 16, 2025  
IGI Report Number **670418215**  
ROUND BRILLIANT  
NATURAL DIAMOND  
5.22 - 5.24 X 3.24 MM  
Carat Weight **0.54 CARAT**  
Color Grade **H**  
Clarity Grade **SI 1**  
Cut Grade **EXCELLENT**  
Polish **EXCELLENT**  
Symmetry **EXCELLENT**  
Fluorescence **STRONG**  
Inscription(s) **IGI 670418215**  
Comments: IDEAL CUT ROUND BRILLIANT



THIS DOCUMENT WAS PRODUCED WITH THE FOLLOWING SECURITY MEASURES: SPECIAL DOCUMENT PAPER, INK SCREENS, WATERMARK, BACKGROUND DESIGNS, HOLOGRAM AND OTHER SECURITY FEATURES NOT LISTED AND DO EXCEED DOCUMENT SECURITY INDUSTRY GUIDELINES.

For terms & conditions and to verify this report, please visit [www.igi.org](http://www.igi.org)