



INTERNATIONAL GEMOLOGICAL INSTITUTE

DIAMOND REPORT

January 17, 2025
IGI Report Number **670418248**
Description **NATURAL DIAMOND**
Shape and Cutting Style **ROUND BRILLIANT**
Measurements **5.64 - 5.67 X 3.59 MM**

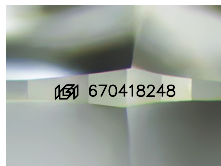
GRADING RESULTS

Carat Weight **0.71 CARAT**
Color Grade **K**
Clarity Grade **SI 2**
Cut Grade **EXCELLENT**

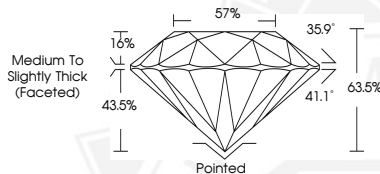
ADDITIONAL GRADING INFORMATION

Polish **EXCELLENT**
Symmetry **EXCELLENT**
Fluorescence **NONE**
Identification Features **CRYSTAL, FEATHER, CLOUD**
Inscription(s) **(G) 670418248**

ELECTRONIC COPY



Sample Image Used



January 17, 2025
IGI Report Number **670418248**
ROUND BRILLIANT
NATURAL DIAMOND
5.64 - 5.67 X 3.59 MM
Carat Weight **0.71 CARAT**
Color Grade **K**
Clarity Grade **SI 2**
Cut Grade **EXCELLENT**
Polish **EXCELLENT**
Symmetry **EXCELLENT**
Fluorescence **NONE**
Inscription(s) **(G) 670418248**



January 17, 2025
IGI Report Number **670418248**
ROUND BRILLIANT
NATURAL DIAMOND
5.64 - 5.67 X 3.59 MM
Carat Weight **0.71 CARAT**
Color Grade **K**
Clarity Grade **SI 2**
Cut Grade **EXCELLENT**
Polish **EXCELLENT**
Symmetry **EXCELLENT**
Fluorescence **NONE**
Inscription(s) **(G) 670418248**



THIS DOCUMENT WAS PRODUCED WITH THE FOLLOWING SECURITY MEASURES: SPECIAL DOCUMENT PAPER, INK SCREENS, WATERMARK, BACKGROUND DESIGNS, HOLOGRAM AND OTHER SECURITY FEATURES NOT LISTED AND DO EXCEED DOCUMENT SECURITY INDUSTRY GUIDELINES.

For terms & conditions and to verify this report, please visit www.igi.org