



# INTERNATIONAL GEMOLOGICAL INSTITUTE

ELECTRONIC COPY

## DIAMOND REPORT

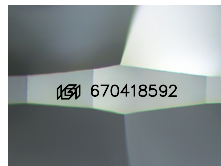
January 21, 2025  
IGI Report Number **670418592**  
Description **NATURAL DIAMOND**  
Shape and Cutting Style **ROUND BRILLIANT**  
Measurements **4.22 - 4.25 X 2.70 MM**

## GRADING RESULTS

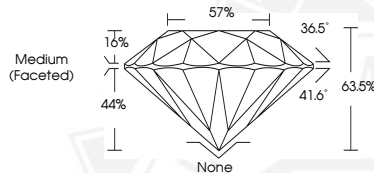
Carat Weight **0.30 CARAT**  
Color Grade **J**  
Clarity Grade **SI 1**  
Cut Grade **EXCELLENT**

## ADDITIONAL GRADING INFORMATION

Polish **EXCELLENT**  
Symmetry **EXCELLENT**  
Fluorescence **VERY SLIGHT**  
Identification Features **FEATHER, CRYSTAL, CHIP**  
Inscription(s) **(IGI) 670418592**



Sample Image Used



January 21, 2025  
IGI Report Number **670418592**  
**ROUND BRILLIANT**  
**NATURAL DIAMOND**  
**4.22 - 4.25 X 2.70 MM**  
Carat Weight **0.30 CARAT**  
Color Grade **J**  
Clarity Grade **SI 1**  
Cut Grade **EXCELLENT**  
Polish **EXCELLENT**  
Symmetry **EXCELLENT**  
Fluorescence **VERY SLIGHT**  
Inscription(s) **(IGI) 670418592**



January 21, 2025  
IGI Report Number **670418592**  
**ROUND BRILLIANT**  
**NATURAL DIAMOND**  
**4.22 - 4.25 X 2.70 MM**  
Carat Weight **0.30 CARAT**  
Color Grade **J**  
Clarity Grade **SI 1**  
Cut Grade **EXCELLENT**  
Polish **EXCELLENT**  
Symmetry **EXCELLENT**  
Fluorescence **VERY SLIGHT**  
Inscription(s) **(IGI) 670418592**



THIS DOCUMENT WAS PRODUCED WITH THE FOLLOWING SECURITY MEASURES: SPECIAL DOCUMENT PAPER, INK SCREENS, WATERMARK, BACKGROUND DESIGN, HOLOGRAM AND OTHER SECURITY FEATURES NOT LISTED AND DO EXCEED DOCUMENT SECURITY INDUSTRY GUIDELINES.

For terms & conditions and to verify this report, please visit [www.igi.org](http://www.igi.org)