



# INTERNATIONAL GEMOLOGICAL INSTITUTE

ELECTRONIC COPY

## DIAMOND REPORT

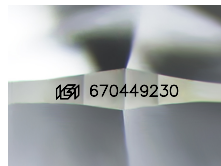
January 8, 2025  
IGI Report Number **670449230**  
Description **NATURAL DIAMOND**  
Shape and Cutting Style **ROUND BRILLIANT**  
Measurements **4.93 - 4.95 X 3.07 MM**

## GRADING RESULTS

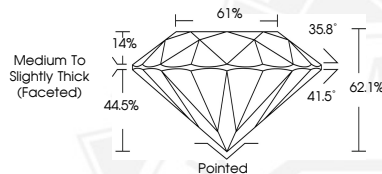
Carat Weight **0.46 CARAT**  
Color Grade **H**  
Clarity Grade **SI 1**  
Cut Grade **EXCELLENT**

## ADDITIONAL GRADING INFORMATION

Polish **EXCELLENT**  
Symmetry **EXCELLENT**  
Fluorescence **NONE**  
Identification Features **FEATHER**  
Inscription(s) **(IGI) 670449230**



Sample Image Used



January 8, 2025  
IGI Report Number **670449230**  
ROUND BRILLIANT  
NATURAL DIAMOND  
4.93 - 4.95 X 3.07 MM  
Carat Weight **0.46 CARAT**  
Color Grade **H**  
Clarity Grade **SI 1**  
Cut Grade **EXCELLENT**  
Polish **EXCELLENT**  
Symmetry **EXCELLENT**  
Fluorescence **NONE**  
Inscription(s) **(IGI) 670449230**



January 8, 2025  
IGI Report Number **670449230**  
ROUND BRILLIANT  
NATURAL DIAMOND  
4.93 - 4.95 X 3.07 MM  
Carat Weight **0.46 CARAT**  
Color Grade **H**  
Clarity Grade **SI 1**  
Cut Grade **EXCELLENT**  
Polish **EXCELLENT**  
Symmetry **EXCELLENT**  
Fluorescence **NONE**  
Inscription(s) **(IGI) 670449230**



THIS DOCUMENT WAS PRODUCED WITH THE FOLLOWING SECURITY MEASURES: SPECIAL DOCUMENT PAPER, INK SCREENS, WATERMARK, BACKGROUND DESIGNS, HOLOGRAM AND OTHER SECURITY FEATURES NOT LISTED AND DO EXCEED DOCUMENT SECURITY INDUSTRY GUIDELINES.

For terms & conditions and to verify this report, please visit [www.igi.org](http://www.igi.org)