



INTERNATIONAL GEMOLOGICAL INSTITUTE

DIAMOND REPORT

January 23, 2025
IGI Report Number **670455854**
Description **NATURAL DIAMOND**
Shape and Cutting Style **ROUND BRILLIANT**
Measurements **5.68 - 5.71 X 3.54 MM**

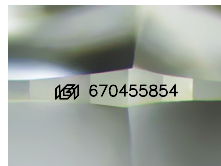
GRADING RESULTS

Carat Weight **0.70 CARAT**
Color Grade **J**
Clarity Grade **VS 1**
Cut Grade **EXCELLENT**

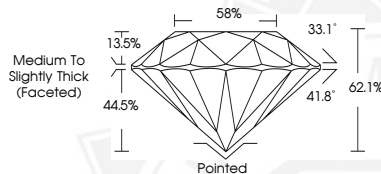
ADDITIONAL GRADING INFORMATION

Polish **EXCELLENT**
Symmetry **EXCELLENT**
Fluorescence **VERY SLIGHT**
Identification Features **CRYSTAL CLOUD**
Inscription(s) **(G) 670455854**

ELECTRONIC COPY



Sample Image Used



January 23, 2025
IGI Report Number **670455854**
ROUND BRILLIANT
NATURAL DIAMOND
5.68 - 5.71 X 3.54 MM
Carat Weight **0.70 CARAT**
Color Grade **J**
Clarity Grade **VS 1**
Cut Grade **EXCELLENT**
Polish **EXCELLENT**
Symmetry **EXCELLENT**
Fluorescence **VERY SLIGHT**
Inscription(s) **(G) 670455854**



January 23, 2025
IGI Report Number **670455854**
ROUND BRILLIANT
NATURAL DIAMOND
5.68 - 5.71 X 3.54 MM
Carat Weight **0.70 CARAT**
Color Grade **J**
Clarity Grade **VS 1**
Cut Grade **EXCELLENT**
Polish **EXCELLENT**
Symmetry **EXCELLENT**
Fluorescence **VERY SLIGHT**
Inscription(s) **(G) 670455854**



THIS DOCUMENT WAS PRODUCED WITH THE FOLLOWING SECURITY MEASURES: SPECIAL DOCUMENT PAPER, INK SCREENS, WATERMARK, BACKGROUND DESIGNS, HOLOGRAM AND OTHER SECURITY FEATURES NOT LISTED AND DO EXCEED DOCUMENT SECURITY INDUSTRY GUIDELINES.

For terms & conditions and to verify this report, please visit www.igi.org