



**ELECTRONIC COPY**

## DIAMOND REPORT

January 7, 2025	
IGI Report Number	670478748
Description	NATURAL DIAMOND
Shape and Cutting Style	ROUND BRILLIANT
Measurements	7.82 - 7.94 X 5.02 MM

## GRADING RESULTS

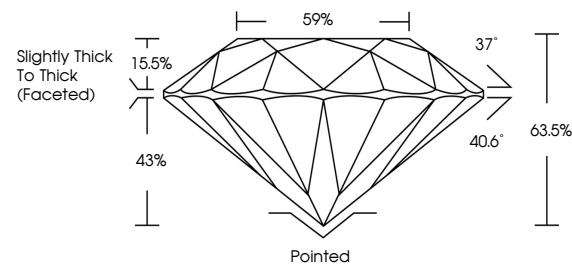
Carat Weight	2.01 CARATS
Color Grade	J
Clarity Grade	SI 1
Cut Grade	VERY GOOD

### ADDITIONAL GRADING INFORMATION

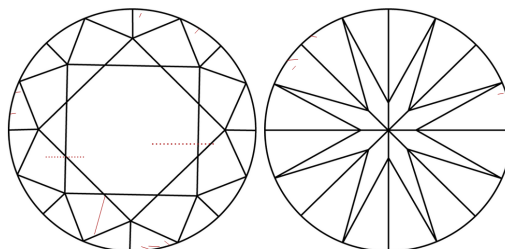
Polish	EXCELLENT
Symmetry	VERY GOOD
Fluorescence	NONE
Inscription(s)	131 670478748

670478748  
Report verification at [igi.org](https://igi.org)

## PROPORTIONS

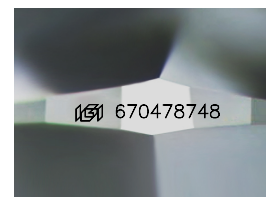


## CLARITY CHARACTERISTICS



### KEY TO SYMBOLS

Red symbols indicate internal characteristics.  
Green symbols indicate external characteristics.



Sample Image Used

**COLOR**

D - F	G - J	K - M	N - R	S - Z	FANCY
Colorless	Near Colorless	Slightly Tinted	Very Light Color	Light Color	

## CLARITY

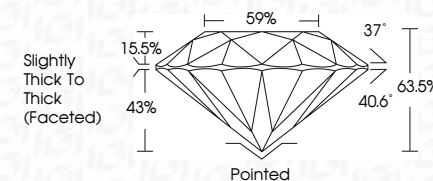
IF	VVS <sup>1-2</sup>	VS <sup>1-2</sup>	SI <sup>1-2</sup>	I <sup>1-3</sup>
Internally Flawless	Very Very Slightly Included	Very Slightly Included	Slightly Included	Included



January 7, 2025	
IGI Report Number	670478748
Description	NATURAL DIAMOND
Shape and Cutting Style	ROUND BRILLIANT
Measurements	7.82 - 7.94 X 5.02 MM

## GRADING RESULTS

Carat Weight	2.01 CARATS
Color Grade	J
Clarity Grade	SI 1
Cut Grade	VERY GOOD



### ADDITIONAL GRADING INFORMATION

Polish	EXCELLENT
Symmetry	VERY GOOD
Fluorescence	NONE
Inscription(s)	(18) 670478748



© IGI 2020, International Gemological Institute

FD - 10 20



THIS DOCUMENT WAS PRODUCED WITH THE FOLLOWING SECURITY MEASURES: SPECIAL DOCUMENT PAPER, INK SCREENS, WATERMARK, BACKGROUND DESIGNS, HOLOGRAM AND OTHER SECURITY FEATURES NOT LISTED AND DO EXCEED DOCUMENT SECURITY INDUSTRY GUIDELINE

**www.igi.org**

January 7, 2025  
 IGI Report No 6704  
 BOUND BRILLIANT

2.82 - 7.94 X 5.02 MM	Carat Weight	2.01 CARATS
	Color Grade	J
	Clarity Grade	S11
	Cut Grade	VERY GOOD
	Depth	63.65%
	Table	59%
	Girdle	Slightly Thick to Thick (faceted)
	Culet	Pointed
	Polish	EXCELLENT
	Symmetry	VERY GOOD
	Fluorescence	NONE