



ELECTRONIC COPY

DIAMOND REPORT

June 2, 2025	
IGI Report Number	670479618
Description	NATURAL DIAMOND
Shape and Cutting Style	ROUND BRILLIANT
Measurements	7.38 - 7.43 X 4.59 MM

GRADING RESULTS

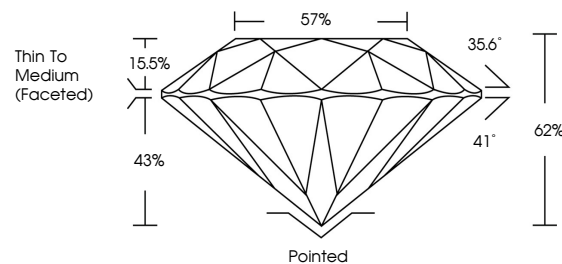
Carat Weight	1.54 CARAT
Color Grade	I
Clarity Grade	VVS 2
Cut Grade	EXCELLENT

ADDITIONAL GRADING INFORMATION

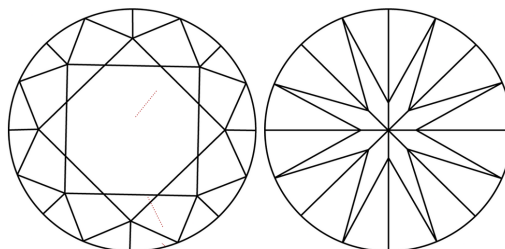
Polish	EXCELLENT
Symmetry	EXCELLENT
Fluorescence	NONE
Inscription(s)	 670479618
Comments: IDEAL CUT ROUND BRILLIANT	

670479618
Report verification at igi.org

PROPORTIONS

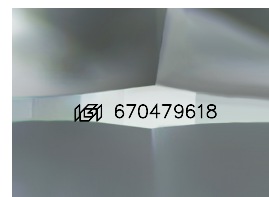


CLARITY CHARACTERISTICS



KEY TO SYMBOLS

Red symbols indicate internal characteristics.
Green symbols indicate external characteristics.



Sample Image Used

COLOR

D - F	G - J	K - M	N - R	S - Z	FANCY
Colorless	Near Colorless	Slightly Tinted	Very Light Color	Light Color	

CLARITY

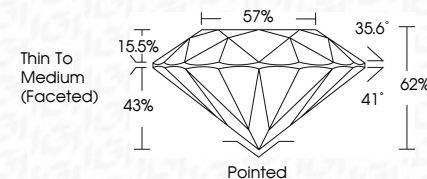
IF	WS ¹⁻²	VS ¹⁻²	SI ¹⁻²	I ¹⁻³
Internally Flawless	Very Very Slightly Included	Very Slightly Included	Slightly Included	Included



June 2, 2025	
IGI Report Number	670479618
Description	NATURAL DIAMOND
Shape and Cutting Style	ROUND BRILLIANT
Measurements	7.38 - 7.43 X 4.59 MM

GRADING RESULTS

Carat Weight	1.54 CARAT
Color Grade	I
Clarity Grade	VVS 2
Cut Grade	EXCELLENT



ADDITIONAL GRADING INFORMATION

Polish	EXCELLENT
Symmetry	EXCELLENT
Fluorescence	NONE
Inscription(s)	(G) 670479618
Comments: IDEAL CUT ROUND BRILLIANT	



IG



© IGI 2020, International Gemological Institute

FD - 10 20



THIS DOCUMENT WAS PRODUCED WITH THE FOLLOWING SECURITY MEASURES: SPECIAL DOCUMENT PAPER, INK SCREENS, WATERMARK, BACKGROUND DESIGNS, HOLOGRAM AND OTHER SECURITY FEATURES NOT LISTED AND DO EXCEED DOCUMENT SECURITY INDUSTRY GUIDELINES

www.igi.org

June 2, 2025
IGI Report No 670479618
ROUND BRILLIANT

1.38 - 7.43 X 4.59 MM	1.54 CARAT	
Carat Weight	VVS 2	
Color Grade	EXCELLENT	
Clarity Grade	62%	
Cut Grade	57%	
Depth	Thin To Medium	
Table	Faceted	
Grade	Polished	
	EXCELLENT	
	EXCELLENT	
	NONE	
	see 670702018	

Comments:
IDEAL CUT ROUND BRILLIANT