



INTERNATIONAL GEMOLOGICAL INSTITUTE

DIAMOND REPORT

January 15, 2025

IGI Report Number

Description

Shape and Cutting Style

Measurements

671430752

NATURAL DIAMOND

ROUND BRILLIANT

5.20 - 5.24 X 3.24 MM

GRADING RESULTS

Carat Weight

Color Grade

Clarity Grade

Cut Grade

0.55 CARAT

G

VVS 1

EXCELLENT

ADDITIONAL GRADING INFORMATION

Polish

Symmetry

Fluorescence

Identification Features

Inscription(s)

Comments: IDEAL CUT ROUND BRILLIANT

EXCELLENT

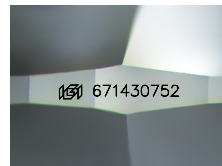
EXCELLENT

VERY SLIGHT

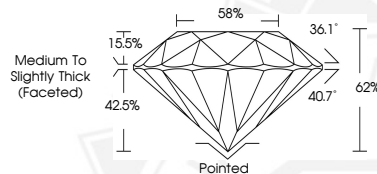
PINPOINT

IGI 671430752

ELECTRONIC COPY



Sample Image Used



January 15, 2025

IGI Report Number 671430752

ROUND BRILLIANT

NATURAL DIAMOND

5.20 - 5.24 X 3.24 MM

Carat Weight 0.55 CARAT

Color Grade G

Clarity Grade VVS 1

Cut Grade EXCELLENT

Polish EXCELLENT

Symmetry EXCELLENT

Fluorescence VERY SLIGHT

Inscription(s) IGI 671430752

Comments: IDEAL CUT ROUND

BRILLIANT



January 15, 2025

IGI Report Number 671430752

ROUND BRILLIANT

NATURAL DIAMOND

5.20 - 5.24 X 3.24 MM

Carat Weight 0.55 CARAT

Color Grade G

Clarity Grade VVS 1

Cut Grade EXCELLENT

Polish EXCELLENT

Symmetry EXCELLENT

Fluorescence VERY SLIGHT

Inscription(s) IGI 671430752

Comments: IDEAL CUT ROUND

BRILLIANT



THIS DOCUMENT WAS PRODUCED WITH THE FOLLOWING SECURITY MEASURES: SPECIAL DOCUMENT PAPER, INK SCREENS, WATERMARK, BACKGROUND DESIGNS, HOLOGRAM AND OTHER SECURITY FEATURES NOT LISTED AND DO EXCEED DOCUMENT SECURITY INDUSTRY GUIDELINES.

For terms & conditions and to verify this report, please visit www.igi.org