



ELECTRONIC COPY

DIAMOND REPORT

| | |
|-------------------------|-----------------------|
| January 27, 2025 | |
| IGI Report Number | 671434679 |
| Description | NATURAL DIAMOND |
| Shape and Cutting Style | EMERALD CUT |
| Measurements | 9.54 X 6.81 X 4.74 MM |

GRADING RESULTS

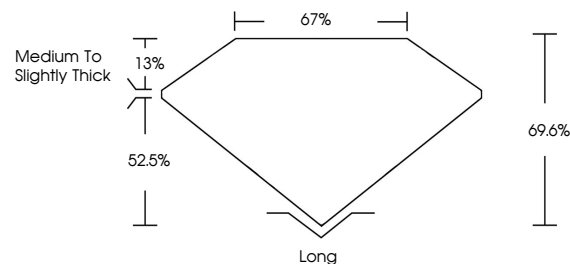
| | |
|---------------|-------------|
| Carat Weight | 3.02 CARATS |
| Color Grade | I |
| Clarity Grade | VVS 1 |
| Cut Grade | VERY GOOD |

ADDITIONAL GRADING INFORMATION

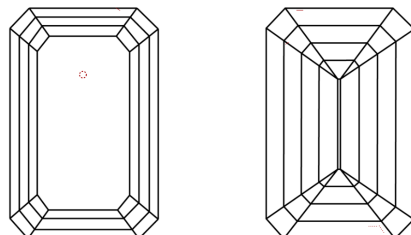
| | |
|----------------|---------------|
| Polish | EXCELLENT |
| Symmetry | EXCELLENT |
| Fluorescence | STRONG |
| Inscription(s) | 131 671434679 |

671434679
Report verification at igi.org

PROPORTIONS

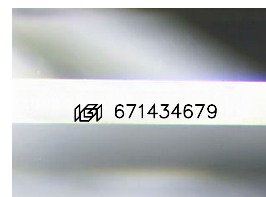


CLARITY CHARACTERISTICS



KEY TO SYMBOLS

Red symbols indicate internal characteristics.
Green symbols indicate external characteristics.



Sample Image Used

COLOR

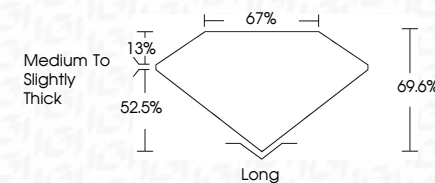
| D - F | G - J | K - M | N - R | S - Z | FANCY |
|-----------|----------------|-----------------|------------------|-------------|-------|
| Colorless | Near Colorless | Slightly Tinted | Very Light Color | Light Color | |

CLARITY

| IF | VVS ¹⁻² | VS ¹⁻² | SI ¹⁻² | I ¹⁻³ |
|---------------------|-----------------------------|------------------------|-------------------|------------------|
| Internally Flawless | Very Very Slightly Included | Very Slightly Included | Slightly Included | Included |



| | |
|-------------------------|-----------------------|
| January 27, 2025 | |
| IGI Report Number | 671434679 |
| Description | NATURAL DIAMOND |
| Shape and Cutting Style | EMERALD CUT |
| Measurements | 9.54 X 6.81 X 4.74 MM |
| GRADING RESULTS | |
| Carat Weight | 3.02 CARATS |
| Color Grade | I |
| Clarity Grade | VVS1 |
| Cut Grade | VERY GOOD |



ADDITIONAL GRADING INFORMATION

| | |
|----------------|---------------|
| Polish | EXCELLENT |
| Symmetry | EXCELLENT |
| Fluorescence | STRONG |
| Inscription(s) | 151 671434679 |



IG



© IGI 2020, International Gemological Institute

FD - 10 20



THIS DOCUMENT WAS PRODUCED WITH THE FOLLOWING SECURITY MEASURES: SPECIAL DOCUMENT PAPER, INK SCREENS, WATERMARK, BACKGROUND DESIGNS, HOLOGRAM AND OTHER SECURITY FEATURES NOT LISTED AND DO EXCEED DOCUMENT SECURITY INDUSTRY GUIDELINES

www.igi.org

January 27, 2025
 IGI Report No 671434679
 EMERALD CITE

| | | | | | |
|--------------------------|-----------------------|---------------|-----------|--------------------------|--------------|
| IGL Report No. 671434679 | 3.02 CARATS | VVS 1 | 67% | Medium to Slightly Thick | Long |
| EMERALD CUT | 9.54 X 6.81 X 4.74 MM | Clarity Grade | Very Good | Excellent | Excellent |
| | Carat Weight | Cut Grade | 66.6% | Excellent | Excellent |
| | Color Grade | Depth | 67% | Strong | Strong |
| | | Table | | Fluorescence | Fluorescence |
| | | Girdle | | | |
| | | Culet | | | |
| | | Polish | | | |
| | | Symmetry | | | |
| | | Fluorescence | | | |
| | | | | | |