



INTERNATIONAL GEMOLOGICAL INSTITUTE

DIAMOND REPORT

January 6, 2025
IGI Report Number **671474677**
Description **NATURAL DIAMOND**
Shape and Cutting Style **CUT CORNERED RECTANGULAR MODIFIED
BRILLIANT**
Measurements **6.13 X 4.79 X 3.42 MM**

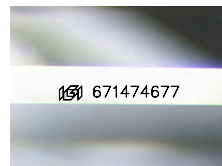
GRADING RESULTS

Carat Weight **0.90 CARAT**
Color Grade **H**
Clarity Grade **SI 1**
Cut Grade **VERY GOOD**

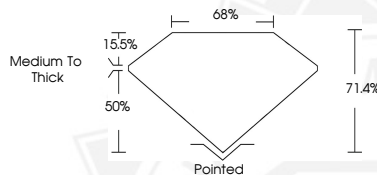
ADDITIONAL GRADING INFORMATION

Polish **EXCELLENT**
Symmetry **EXCELLENT**
Fluorescence **NONE**
Identification Features **CLOUD, CRYSTAL, FEATHER**
Inscription(s) **IGI 671474677**

ELECTRONIC COPY



Sample Image Used



January 6, 2025
IGI Report Number **671474677**
CUT CORNERED RECTANGULAR
MODIFIED BRILLIANT
NATURAL DIAMOND
6.13 X 4.79 X 3.42 MM
Carat Weight **0.90 CARAT**
Color Grade **H**
Clarity Grade **SI 1**
Cut Grade **VERY GOOD**
Polish **EXCELLENT**
Symmetry **EXCELLENT**
Fluorescence **NONE**
Inscription(s) **IGI 671474677**



January 6, 2025
IGI Report Number **671474677**
CUT CORNERED RECTANGULAR
MODIFIED BRILLIANT
NATURAL DIAMOND
6.13 X 4.79 X 3.42 MM
Carat Weight **0.90 CARAT**
Color Grade **H**
Clarity Grade **SI 1**
Cut Grade **VERY GOOD**
Polish **EXCELLENT**
Symmetry **EXCELLENT**
Fluorescence **NONE**
Inscription(s) **IGI 671474677**



THIS DOCUMENT WAS PRODUCED WITH THE FOLLOWING SECURITY MEASURES: SPECIAL DOCUMENT PAPER, INK SCREENS, WATERMARK, BACKGROUND DESIGN, HOLOGRAM AND OTHER SECURITY FEATURES NOT LISTED AND DO EXCEED DOCUMENT SECURITY INDUSTRY GUIDELINES.

For terms & conditions and to verify this report, please visit www.igi.org