



# INTERNATIONAL GEMOLOGICAL INSTITUTE

## DIAMOND REPORT

January 24, 2025  
IGI Report Number **671486751**  
Description **NATURAL DIAMOND**  
Shape and Cutting Style **CUT CORNERED RECTANGULAR MODIFIED  
BRILLIANT**  
Measurements **5.33 X 4.06 X 2.79 MM**

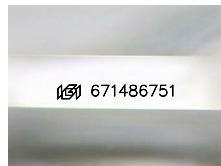
### GRADING RESULTS

Carat Weight **0.53 CARAT**  
Color Grade **G**  
Clarity Grade **VVS 2**  
Cut Grade **VERY GOOD**

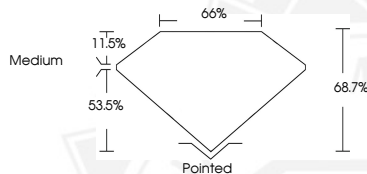
### ADDITIONAL GRADING INFORMATION

Polish **EXCELLENT**  
Symmetry **EXCELLENT**  
Fluorescence **NONE**  
Identification Features **FEATHER**  
Inscription(s) **IGI 671486751**

ELECTRONIC COPY



Sample Image Used



January 24, 2025  
IGI Report Number **671486751**  
CUT CORNERED RECTANGULAR  
MODIFIED BRILLIANT  
NATURAL DIAMOND  
5.33 X 4.06 X 2.79 MM  
Carat Weight **0.53 CARAT**  
Color Grade **G**  
Clarity Grade **VVS 2**  
Cut Grade **VERY GOOD**  
Polish **EXCELLENT**  
Symmetry **EXCELLENT**  
Fluorescence **NONE**  
Inscription(s) **IGI 671486751**



January 24, 2025  
IGI Report Number **671486751**  
CUT CORNERED RECTANGULAR  
MODIFIED BRILLIANT  
NATURAL DIAMOND  
5.33 X 4.06 X 2.79 MM  
Carat Weight **0.53 CARAT**  
Color Grade **G**  
Clarity Grade **VVS 2**  
Cut Grade **VERY GOOD**  
Polish **EXCELLENT**  
Symmetry **EXCELLENT**  
Fluorescence **NONE**  
Inscription(s) **IGI 671486751**



THIS DOCUMENT WAS PRODUCED WITH THE FOLLOWING SECURITY MEASURES: SPECIAL DOCUMENT PAPER, INK SCREENS, WATERMARK, BACKGROUND DESIGN, HOLOGRAM AND OTHER SECURITY FEATURES NOT LISTED AND DO EXCEED DOCUMENT SECURITY INDUSTRY GUIDELINES.

For terms & conditions and to verify this report, please visit [www.igi.org](http://www.igi.org)