



ELECTRONIC COPY

DIAMOND REPORT

February 11, 2025	
IGI Report Number	673409094
Description	NATURAL DIAMOND
Shape and Cutting Style	CUT CORNERED RECTANGULAR MODIFIED BRILLIANT
Measurements	7.47 X 5.15 X 3.42 MM

GRADING RESULTS

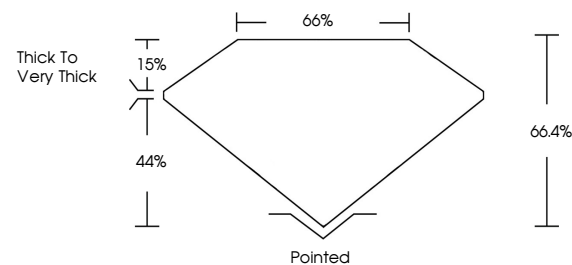
Carat Weight	1.33 CARAT
Color Grade	J
Clarity Grade	VVS 2
Cut Grade	VERY GOOD

ADDITIONAL GRADING INFORMATION

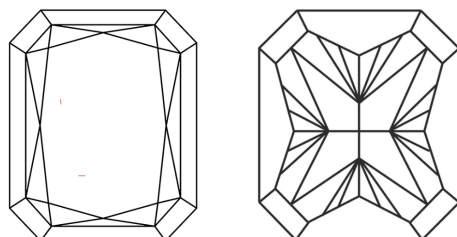
Polish	EXCELLENT
Symmetry	VERY GOOD
Fluorescence	VERY SLIGHT
Inscription(s)	151 673409094

673409094
Report verification at igi.org

PROPORTIONS

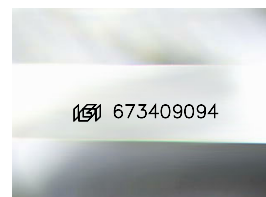


CLARITY CHARACTERISTICS



KEY TO SYMBOLS

Red symbols indicate internal characteristics.
Green symbols indicate external characteristics.



Sample Image Used

COLOR

D - F	G - J	K - M	N - R	S - Z	FANCY
Colorless	Near Colorless	Slightly Tinted	Very Light Color	Light Color	

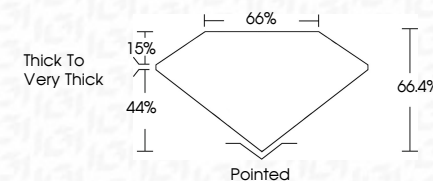
CLARITY

IF	VVS ¹⁻²	VS ¹⁻²	SI ¹⁻²	I ¹⁻³
Internally Flawless	Very Very Slightly Included	Very Slightly Included	Slightly Included	Included

DIAMOND REPORT



February 11, 2025	
IGI Report Number	673409094
Description	NATURAL DIAMOND
Shape and Cutting Style	CUT CORNERED RECTANGULAR MODIFIED BRILLIANT
Measurements	7.47 X 5.15 X 3.42 MM
GRADING RESULTS	
Carat Weight	1.33 CARAT
Color Grade	J
Clarity Grade	VVS 2
Cut Grade	VERY GOOD



ADDITIONAL GRADING INFORMATION

Polish	EXCELLENT
Symmetry	VERY GOOD
Fluorescence	VERY SLIGHT
Inscription(s)	(63) 673409094



© IGI 2020, International Gemological Institute

FD - 10 20

www.igi.org



THIS DOCUMENT WAS PRODUCED WITH THE FOLLOWING SECURITY MEASURES: SPECIAL DOCUMENT PAPER, INK SCREENS, WATERMARK, BACKGROUND DESIGNS, HOLOGRAM AND OTHER SECURITY FEATURES NOT LISTED AND DO EXCEED DOCUMENT SECURITY INDUSTRY GUIDELINE

February 11, 2025	Color Grade	1.33 CARAT
GI Report No. 67349094	Clarity Grade	J
CT CORNERED RECT. MODIFIED BRILLIANT	Cut Grade	VVS 2
	Depth	VERY GOOD
	Table	66.4%
	Girdle	66%
		Thick to Very Thick
	Culet	Pointed
	Polish	EXCELLENT
	Symmetry	VERY GOOD
	Fluorescence	VERY SLIGHT
		673490940