



ELECTRONIC COPY

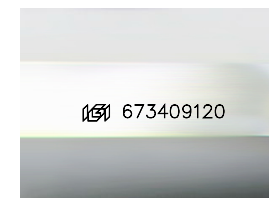
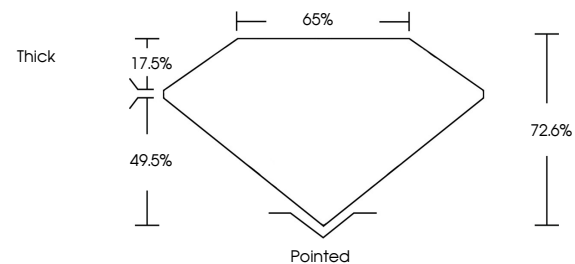
673409120
Report verification at igi.org



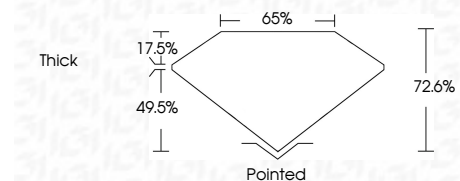
February 17, 2025
IGI Report Number **673409120**
Description **NATURAL DIAMOND**
Shape and Cutting Style **CUT CORNERED
RECTANGULAR MODIFIED
BRILLIANT**
Measurements **7.63 X 5.36 X 3.89 MM**
GRADING RESULTS
Carat Weight **1.50 CARAT**
Color Grade **K**
Clarity Grade **SI 1**
Cut Grade **VERY GOOD**

February 17, 2025
IGI Report Number **673409120**
Description **NATURAL DIAMOND**
Shape and Cutting Style **CUT CORNERED RECTANGULAR
MODIFIED BRILLIANT**
Measurements **7.63 X 5.36 X 3.89 MM**

PROPORTIONS



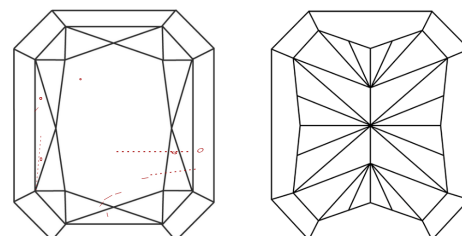
Sample Image Used



GRADING RESULTS

Carat Weight **1.50 CARAT**
Color Grade **K**
Clarity Grade **SI 1**
Cut Grade **VERY GOOD**

CLARITY CHARACTERISTICS



KEY TO SYMBOLS

Red symbols indicate internal characteristics.
Green symbols indicate external characteristics.

COLOR

D - F	G - J	K - M	N - R	S - Z	FANCY
Colorless	Near Colorless	Slightly Tinted	Very Light Color	Light Color	

CLARITY

IF	VVS ¹⁻²	VS ¹⁻²	SI ¹⁻²	I ¹⁻³
Internally Flawless	Very Very Slightly Included	Very Slightly Included	Slightly Included	Included

ADDITIONAL GRADING INFORMATION

Polish **EXCELLENT**
Symmetry **EXCELLENT**
Fluorescence **NONE**
Inscription(s) **IGI 673409120**

ADDITIONAL GRADING INFORMATION

Polish **EXCELLENT**
Symmetry **EXCELLENT**
Fluorescence **NONE**
Inscription(s) **IGI 673409120**



IGI

February 17, 2025
IGI Report No 673409120
CUT CORNERED RECT. MODIFIED BRILLIANT
7.63 X 5.36 X 3.89 MM
1.50 CARAT
K
SI 1
VERY GOOD
72.6%
65%
Thick
Pointed
EXCELLENT
EXCELLENT
NONE
IGI 673409120