



ELECTRONIC COPY

674522769
Report verification at igi.org



March 8, 2025

IGI Report Number **674522769**

Description **NATURAL DIAMOND**

Shape and Cutting Style **EMERALD CUT**

Measurements **6.44 X 4.66 X 3.34 MM**

GRADING RESULTS

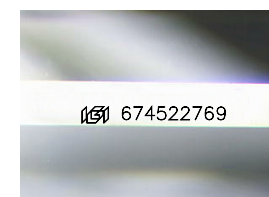
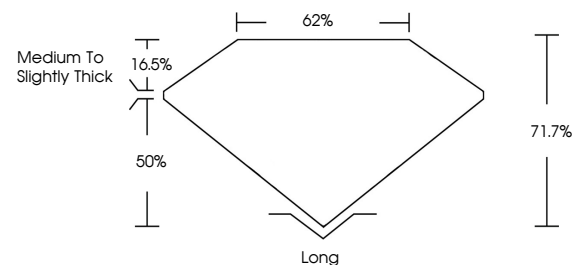
Carat Weight **1.00 CARAT**

Color Grade **K**

Clarity Grade **SI 2**

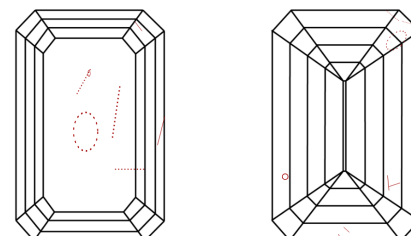
Cut Grade **VERY GOOD**

PROPORTIONS



Sample Image Used

CLARITY CHARACTERISTICS



KEY TO SYMBOLS

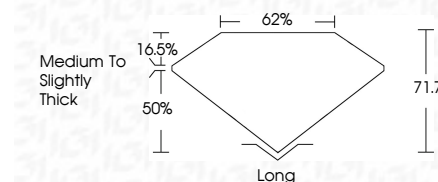
Red symbols indicate internal characteristics.
Green symbols indicate external characteristics.

COLOR

D - F	G - J	K - M	N - R	S - Z	FANCY
Colorless	Near Colorless	Slightly Tinted	Very Light Color	Light Color	

CLARITY

IF	VVS ¹⁻²	VS ¹⁻²	SI ¹⁻²	I ¹⁻³
Internally Flawless	Very Very Slightly Included	Very Slightly Included	Slightly Included	Included



ADDITIONAL GRADING INFORMATION

Polish **EXCELLENT**

Symmetry **VERY GOOD**

Fluorescence **NONE**

Inscription(s) **IGI 674522769**

March 8, 2025
IGI Report Number **674522769**
Description **NATURAL DIAMOND**
Shape and Cutting Style **EMERALD CUT**
Measurements **6.44 X 4.66 X 3.34 MM**

GRADING RESULTS

Carat Weight **1.00 CARAT**

Color Grade **K**

Clarity Grade **SI 2**

Cut Grade **VERY GOOD**

ADDITIONAL GRADING INFORMATION

Polish **EXCELLENT**

Symmetry **VERY GOOD**

Fluorescence **NONE**

Inscription(s) **IGI 674522769**



IGI



March 8, 2025
IGI Report No 674522769
EMERALD CUT
6.44 X 4.66 X 3.34 MM
1.00 CARAT
K
SI 2
VERY GOOD
62%
Medium To Slightly Thick
Long
EXCELLENT
VERY GOOD
NONE
IGI 674522769