



**ELECTRONIC COPY**

## DIAMOND REPORT

April 29, 2025	
IGI Report Number	674526494
Description	NATURAL DIAMOND
Shape and Cutting Style	ROUND BRILLIANT
Measurements	7.72 - 7.77 X 4.61 MM

## GRADING RESULTS

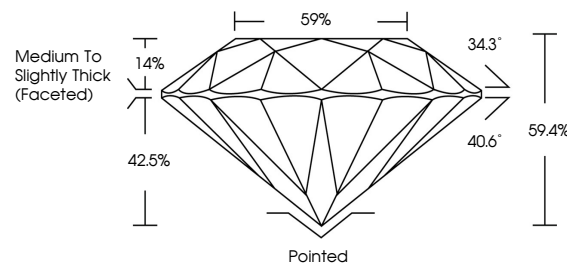
Carat Weight	1.70 CARAT
Color Grade	H
Clarity Grade	SI 1
Cut Grade	EXCELLENT

### ADDITIONAL GRADING INFORMATION

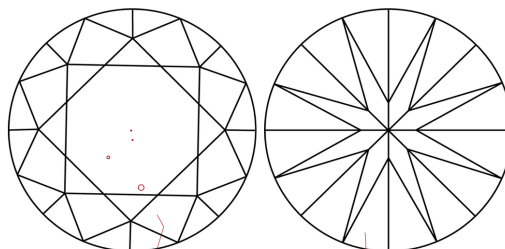
Polish	EXCELLENT
Symmetry	EXCELLENT
Fluorescence	NONE
Inscription(s)	 674526494
Comments: IDEAL CUT ROUND BRILLIANT	

674526494  
Report verification at [igi.org](http://igi.org)

## PROPORTIONS

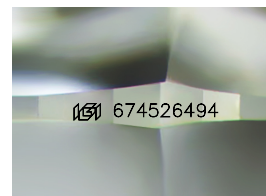


## CLARITY CHARACTERISTICS



## KEY TO SYMBOLS

Red symbols indicate internal characteristics.  
Green symbols indicate external characteristics.



Sample Image Used

**COLOR**

D - F	G - J	K - M	N - R	S - Z	FANCY
Colorless	Near Colorless	Slightly Tinted	Very Light Color	Light Color	

## CLARITY

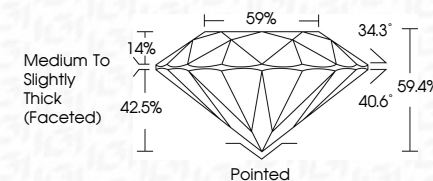
IF	VVS <sup>1-2</sup>	VS <sup>1-2</sup>	SI <sup>1-2</sup>	I <sup>1-3</sup>
Internally Flawless	Very Very Slightly Included	Very Slightly Included	Slightly Included	Included



April 29, 2025	
IGI Report Number	674526494
Description	NATURAL DIAMOND
Shape and Cutting Style	ROUND BRILLIANT
Measurements	7.72 - 7.77 X 4.61 MM

## GRADING RESULTS

Carat Weight	1.70 CARAT
Color Grade	H
Clarity Grade	SI 1
Cut Grade	EXCELLENT



### ADDITIONAL GRADING INFORMATION

Polish	EXCELLENT
Symmetry	EXCELLENT
Fluorescence	NONE
Inscription(s)	<del>(G)</del> 674526494
Comments: IDEAL CUT ROUND BRILLIANT	



© IGI 2020, International Gemological Institute

FD - 10 20



THIS DOCUMENT WAS PRODUCED WITH THE FOLLOWING SECURITY MEASURES: SPECIAL DOCUMENT PAPER, INK SCREENS, WATERMARK, BACKGROUND DESIGNS, HOLOGRAM AND OTHER SECURITY FEATURES NOT LISTED AND DO EXCEED DOCUMENT SECURITY INDUSTRY GUIDELINES

**www.igi.org**

