



# INTERNATIONAL GEMOLOGICAL INSTITUTE

## DIAMOND REPORT

January 27, 2025

IGI Report Number

675518238

Description

NATURAL DIAMOND

Shape and Cutting Style

ROUND BRILLIANT

Measurements

5.70 - 5.74 X 3.53 MM

## GRADING RESULTS

Carat Weight

0.71 CARAT

Color Grade

J

Clarity Grade

SI 1

Cut Grade

EXCELLENT

## ADDITIONAL GRADING INFORMATION

Polish

EXCELLENT

Symmetry

EXCELLENT

Fluorescence

NONE

Identification Features

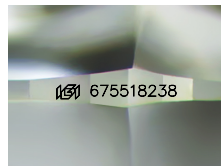
CLOUD, FEATHER, CRYSTAL

Inscription(s)

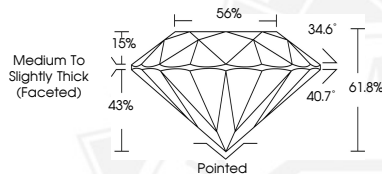
IGI 675518238

Comments: IDEAL CUT ROUND BRILLIANT

ELECTRONIC COPY



Sample Image Used



January 27, 2025

IGI Report Number 675518238

ROUND BRILLIANT

NATURAL DIAMOND

5.70 - 5.74 X 3.53 MM

Carat Weight 0.71 CARAT

Color Grade J

Clarity Grade SI 1

Cut Grade EXCELLENT

Polish EXCELLENT

Symmetry EXCELLENT

Fluorescence NONE

Inscription(s) IGI 675518238

Comments: IDEAL CUT ROUND

BRILLIANT



January 27, 2025

IGI Report Number 675518238

ROUND BRILLIANT

NATURAL DIAMOND

5.70 - 5.74 X 3.53 MM

Carat Weight 0.71 CARAT

Color Grade J

Clarity Grade SI 1

Cut Grade EXCELLENT

Polish EXCELLENT

Symmetry EXCELLENT

Fluorescence NONE

Inscription(s) IGI 675518238

Comments: IDEAL CUT ROUND

BRILLIANT



THIS DOCUMENT WAS PRODUCED WITH THE FOLLOWING SECURITY MEASURES: SPECIAL DOCUMENT PAPER, INK SCREENS, WATERMARK, BACKGROUND DESIGNS, HOLOGRAM AND OTHER SECURITY FEATURES NOT LISTED AND DO EXCEED DOCUMENT SECURITY INDUSTRY GUIDELINES.

For terms & conditions and to verify this report, please visit [www.igi.org](http://www.igi.org)